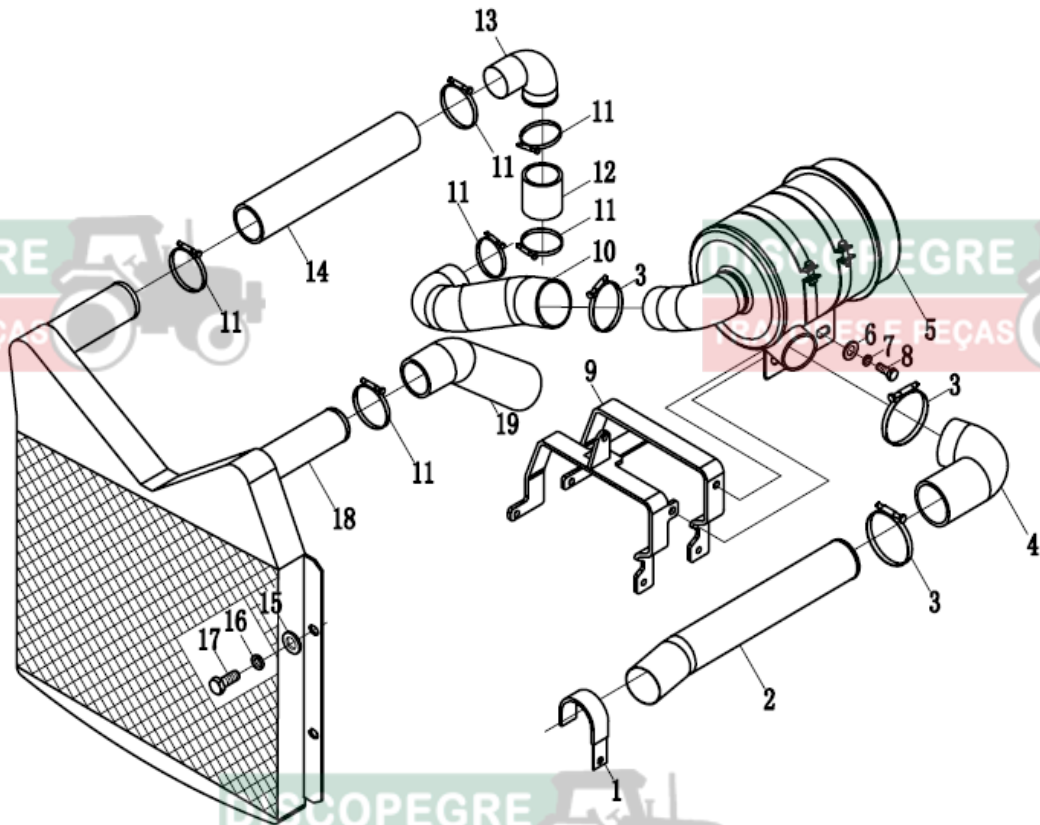


Air Filter Assembly(II)



DISCOPEGRE

TRATORES E PEÇAS

DISCOPEGRE

TRATORES E PEÇAS

DISCOPEGRE

TRATORES E PEÇAS

DISC

TRAT

DISCOPEGRE

TRATORES E PEÇAS

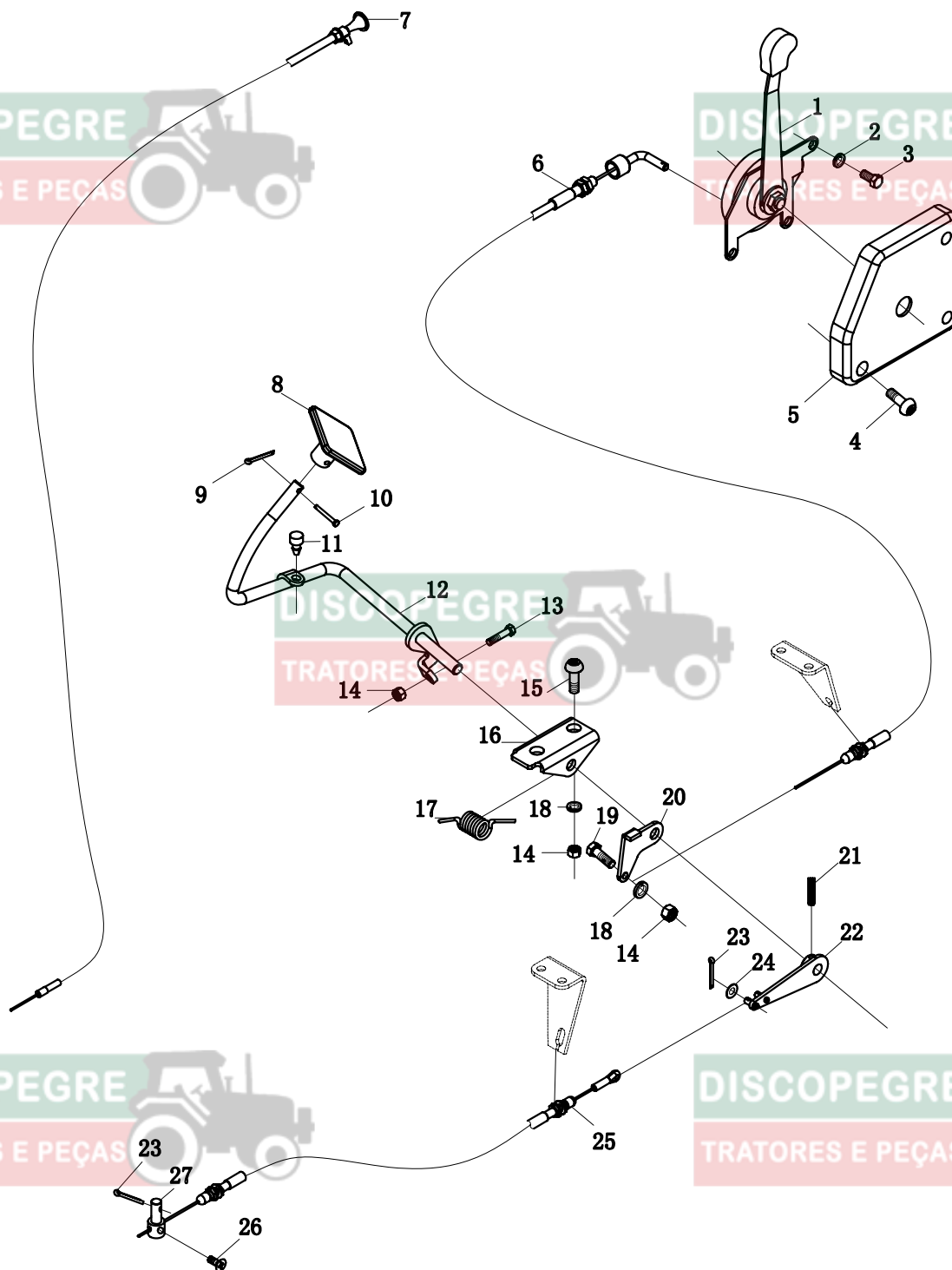
DISCOPEGRE

TRATORES E PEÇAS

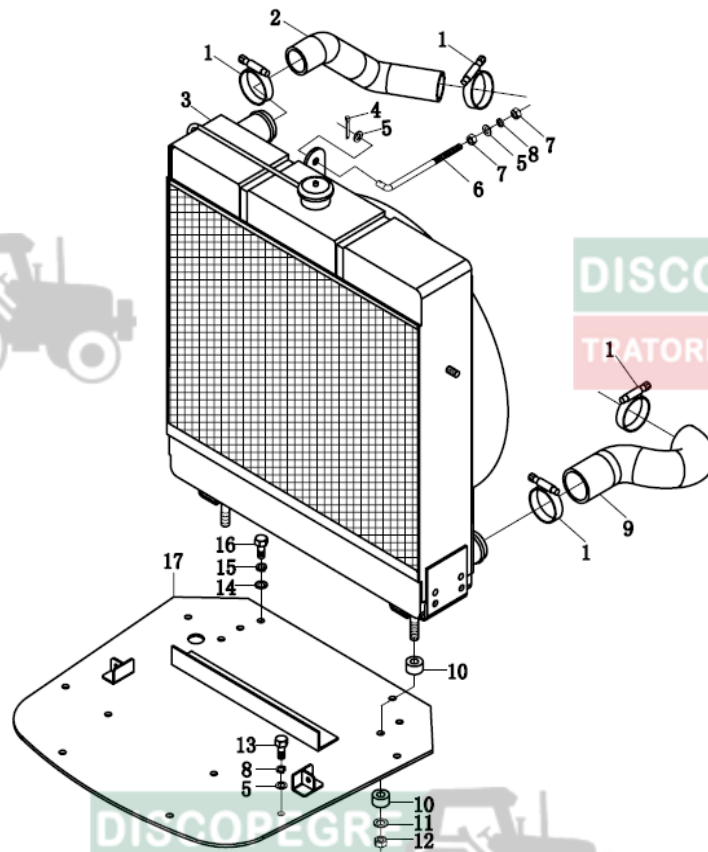
DISCOPEGRE

DISC

Control Mechanism Assembly OF The Engine



Cooling System Assembly(II)



DISCOPEGRE

TRATORES E PEÇAS

DISCOPEGRE

TRATORES E PEÇAS

DISCOPEGRE

TRATORES E PEÇAS

DISC

TRAT

DISCOPEGRE

TRATORES E PEÇAS

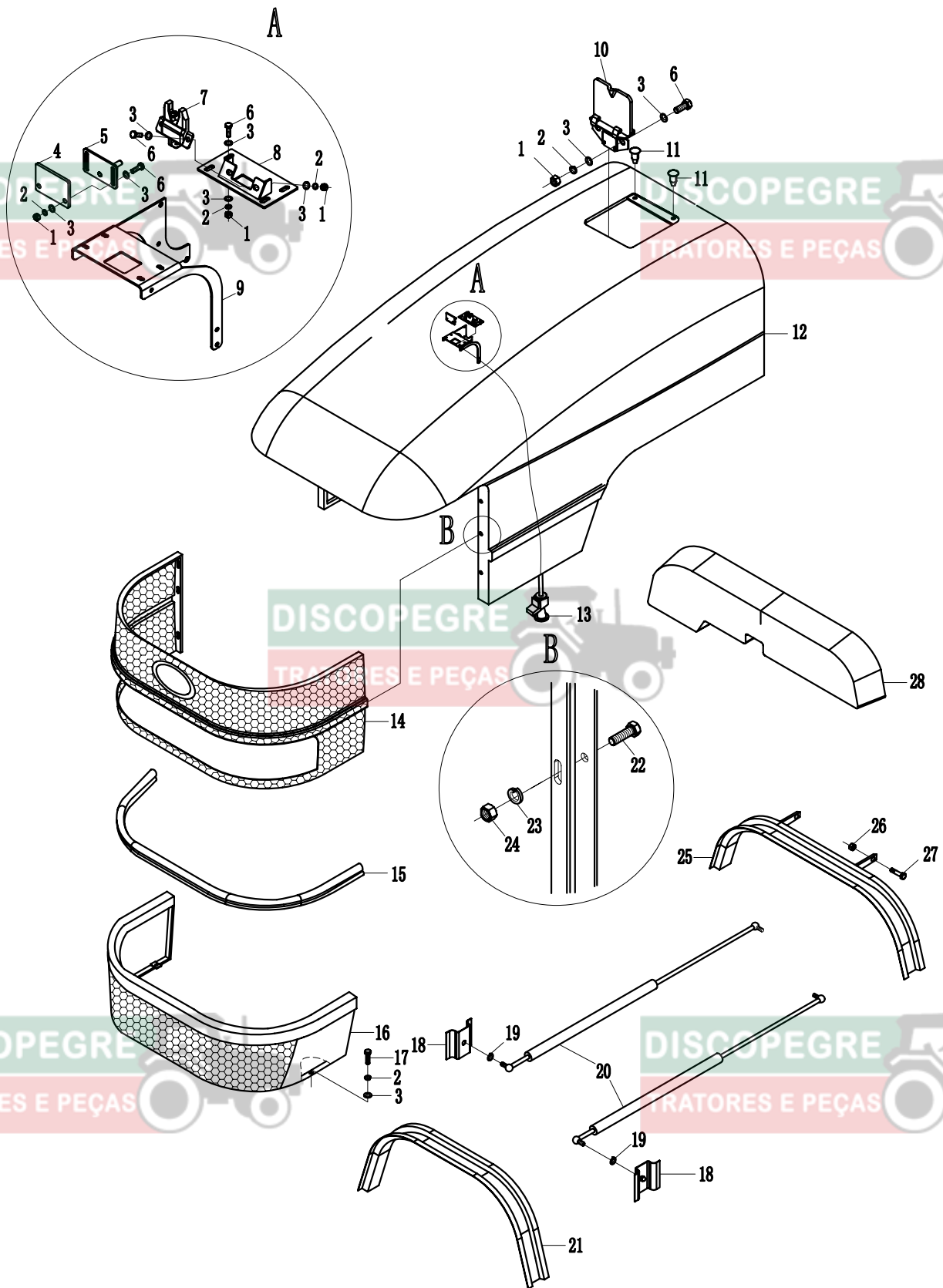
DISCOPEGRE

TRATORES E PEÇAS

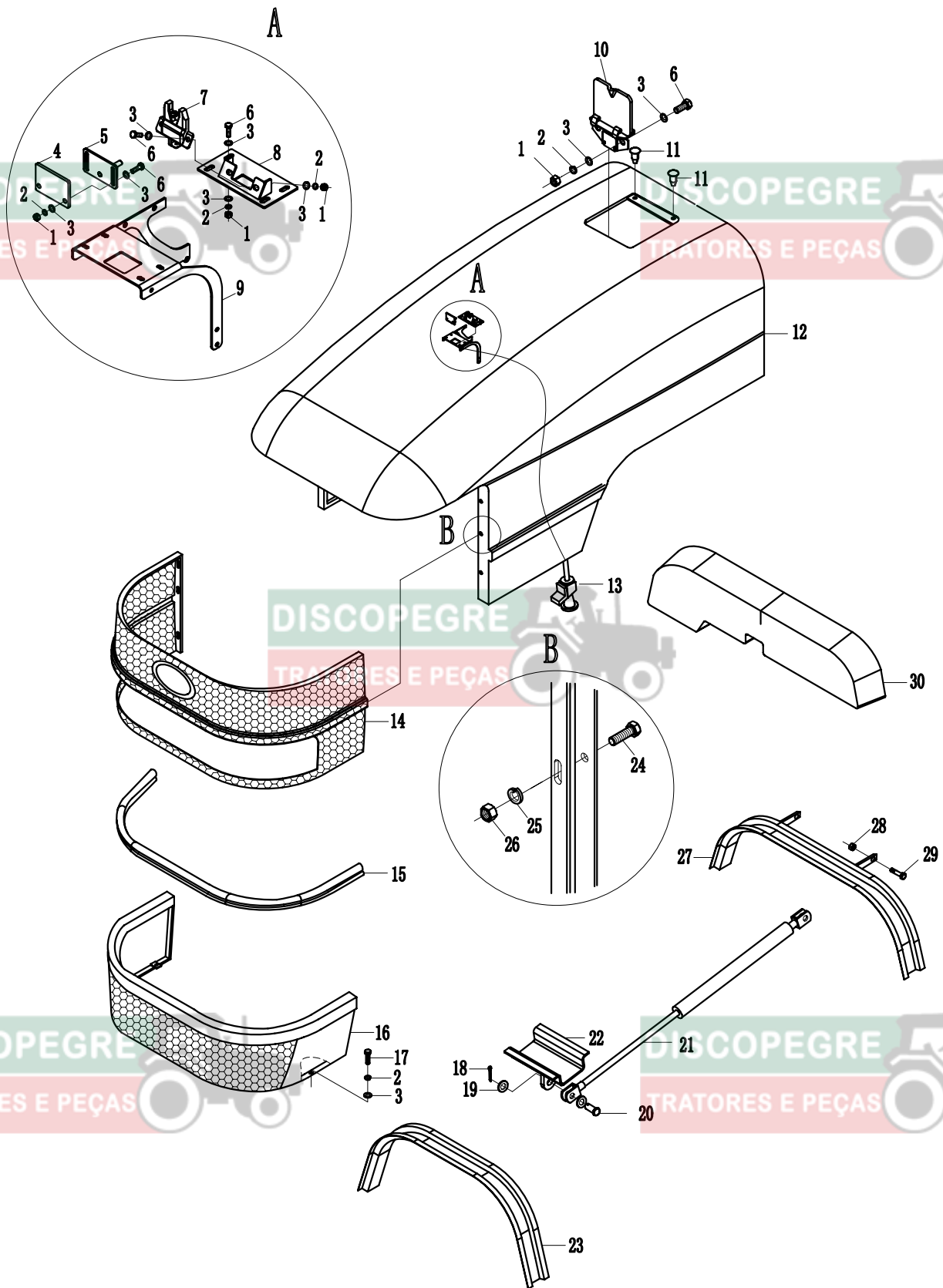
DISCOPEGRE

DISC

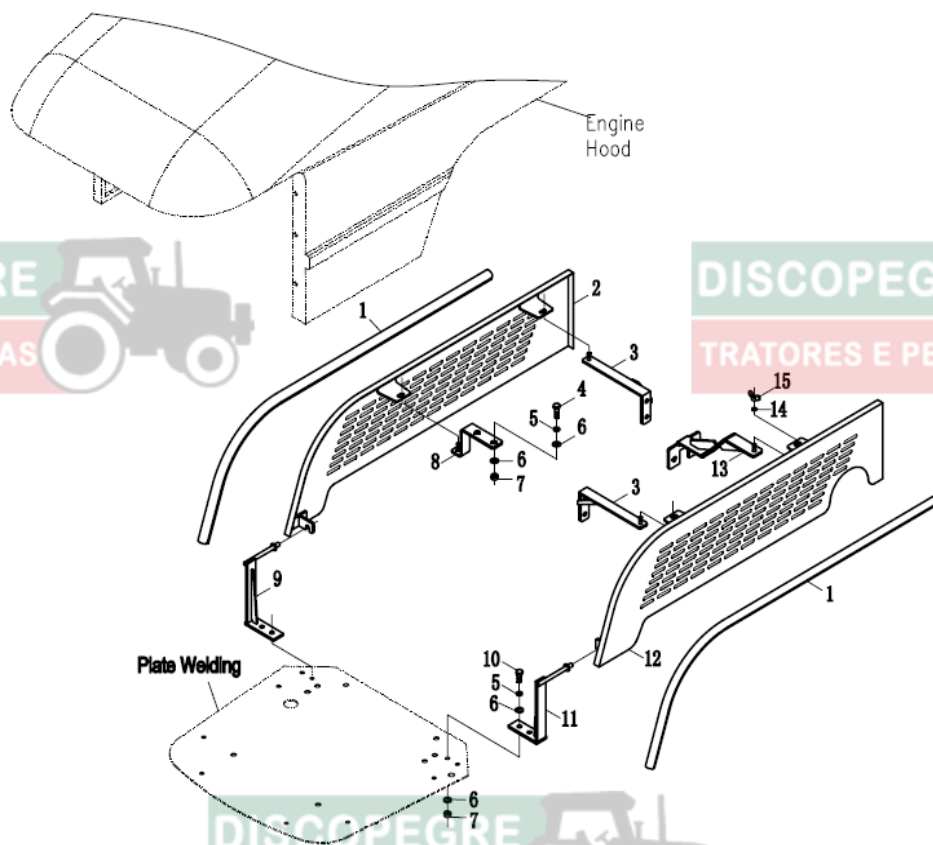
Engine Hood Assembly (I)



Engine Hood Assembly (II)



Engine Hood Side Cover



DISCOPEGRE

TRATORES E PEÇAS

DISCOPEGRE

TRATORES E PEÇAS

DISCOPEGRE

TRATORES E PEÇAS

DISCOPEGRE

TRATORES E PEÇAS

DISCOPEGRE

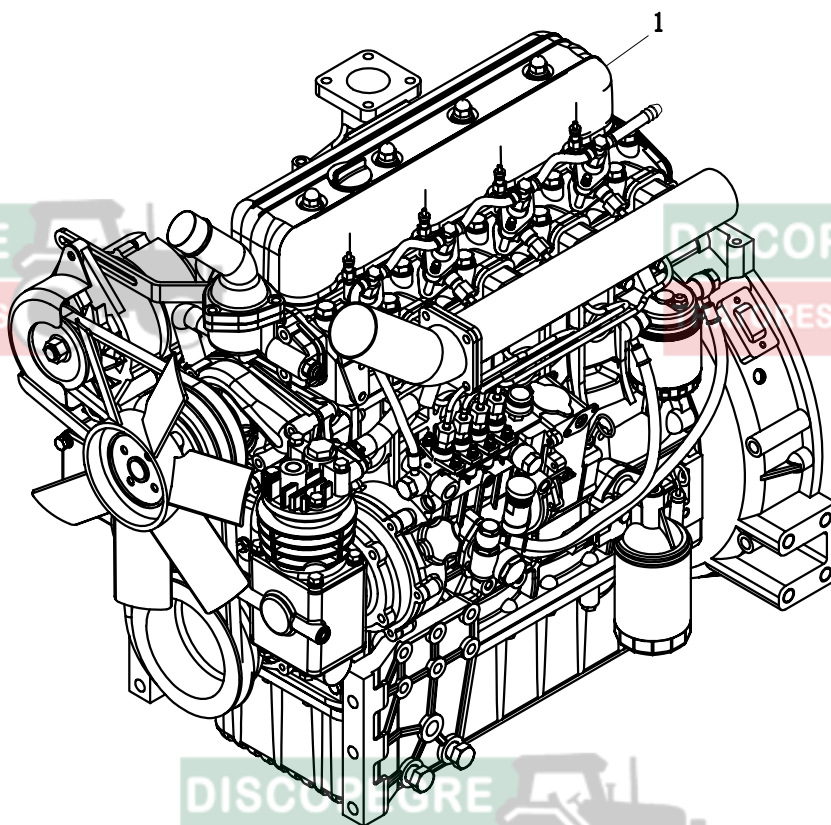
TRATORES E PEÇAS

DISCOPEGRE

TRATORES E PEÇAS

DISCOPEGRE

DISCOPEGRE



DISCOPEGRE

TRATORES E PEÇAS

DISCOPEGRE

TRATORES E PEÇAS

DISCOPEGRE

TRATORES E PEÇAS

DISCO

TRAT

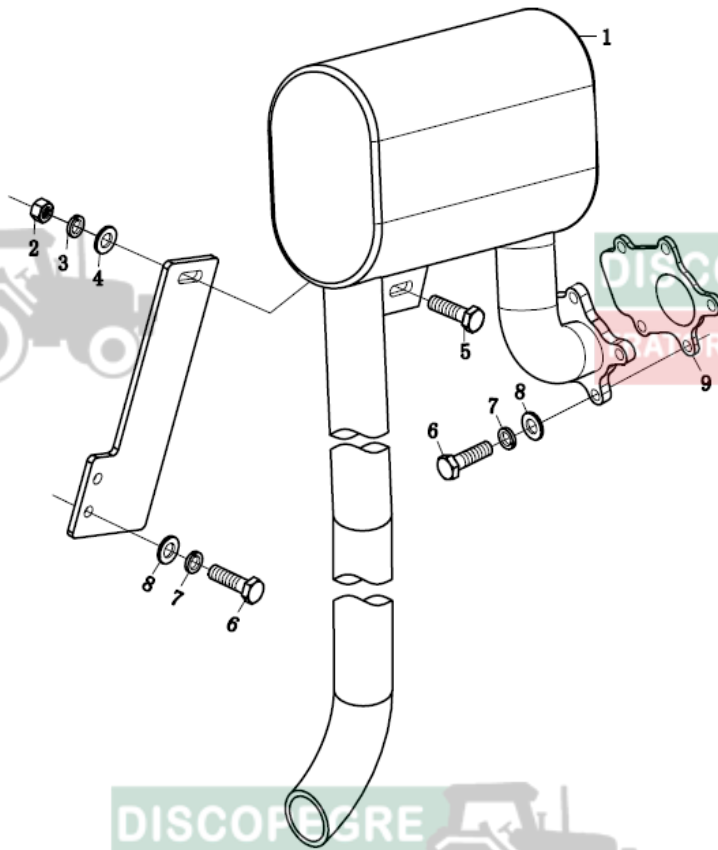
DISCOPEGRE

TRATORES E PEÇAS

DISCOPEGRE

TRATORES E PEÇAS

Exhaust Tube Assembly(II)



DISCOPEGRE

TRATORES E PEÇAS

DISCOPEGRE

TRATORES E PEÇAS

DISCOPEGRE

TRATORES E PEÇAS

DISC

TRAT

DISCOPEGRE

TRATORES E PEÇAS

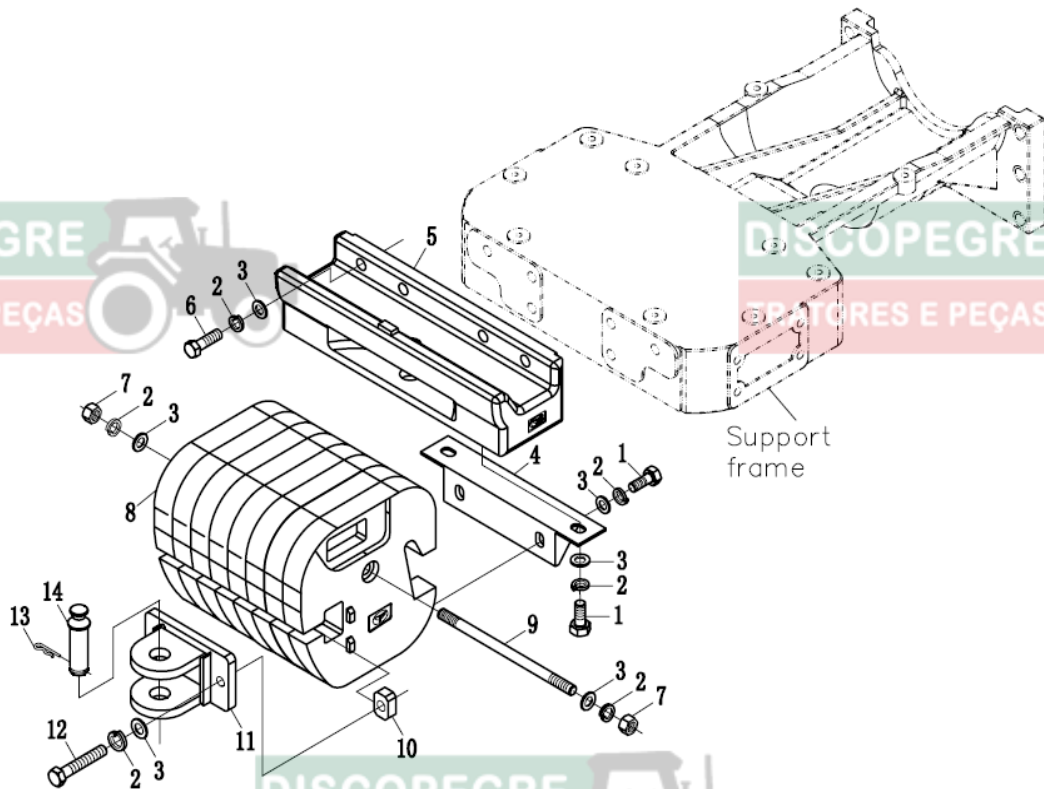
DISCOPEGRE

TRATORES E PEÇAS

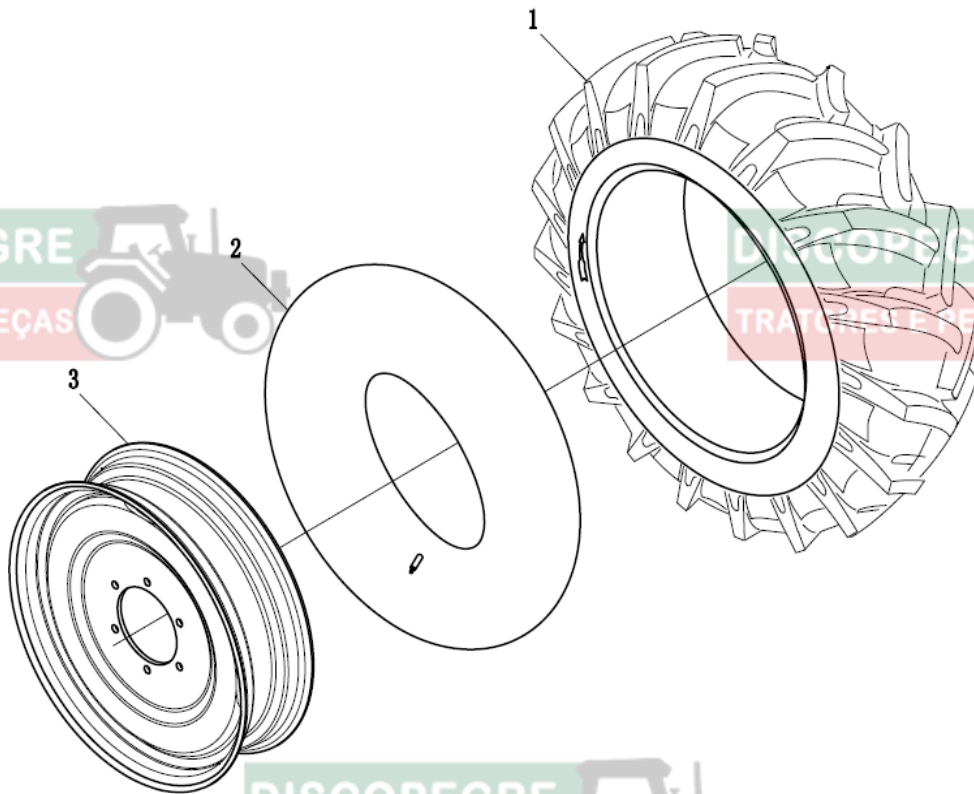
DISCOPEGRE

DISC

Front Ballast Assembly



Front Driving Wheel Assembly



DISCOPEGRE

TRATORES E PEÇAS

DISCOPEGRE

TRATORES E PEÇAS

DISCOPEGRE

TRATORES E PEÇAS

DISC

TRAT

DISCOPEGRE

TRATORES E PEÇAS

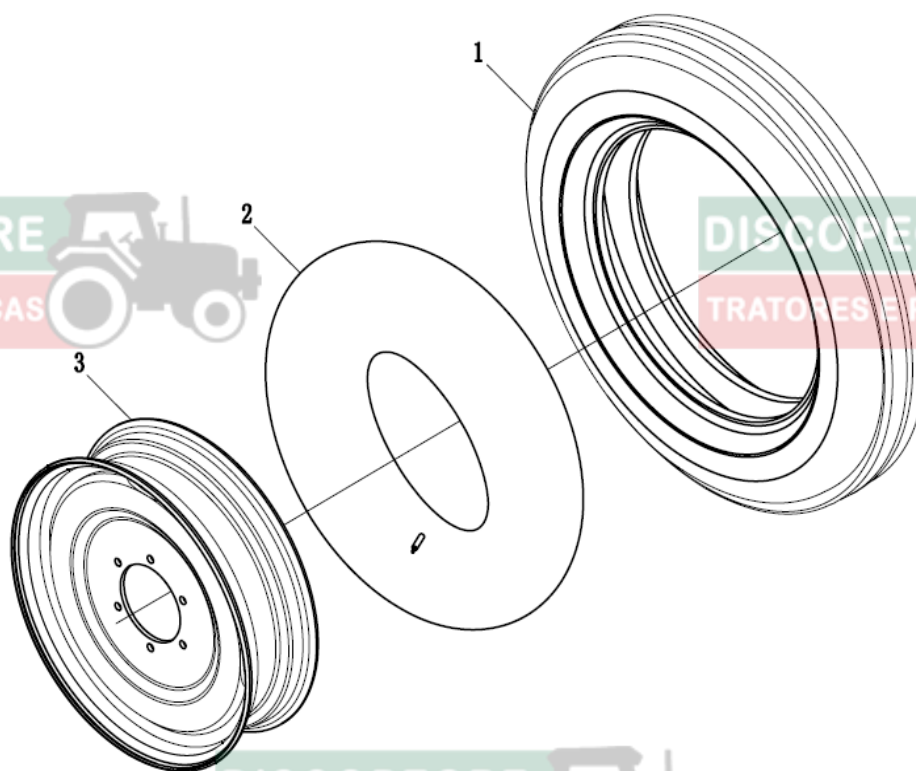
DISCOPEGRE

TRATORES E PEÇAS

DISCOPEGRE

DISC

Front Wheel Assembly



DISCOPEGRE

TRATORES E PEÇAS

DISCOPEGRE

TRATORES E PEÇAS

DISCOPEGRE

TRATORES E PEÇAS

DISC

TRAT

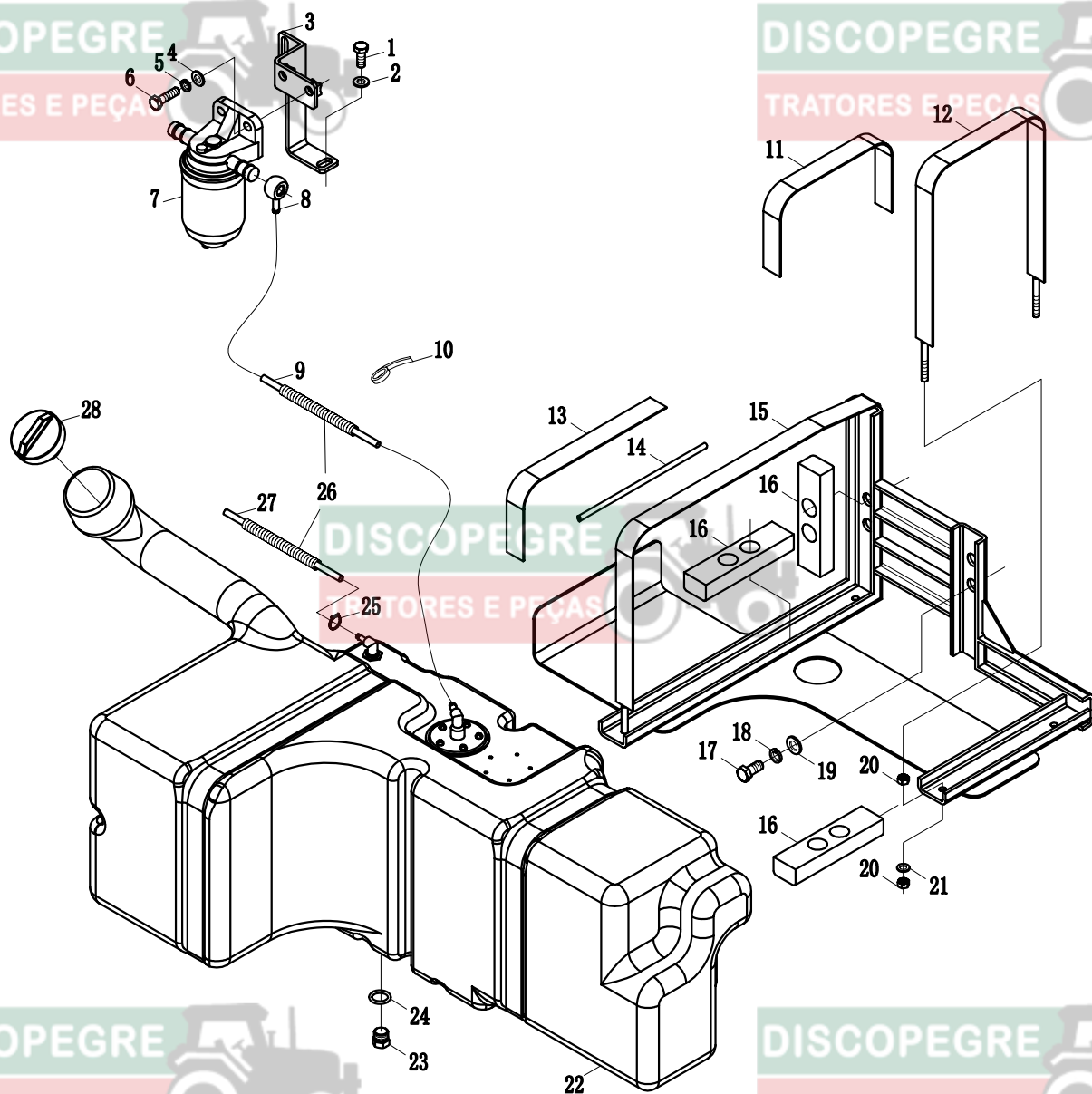
DISCOPEGRE

TRATORES E PEÇAS

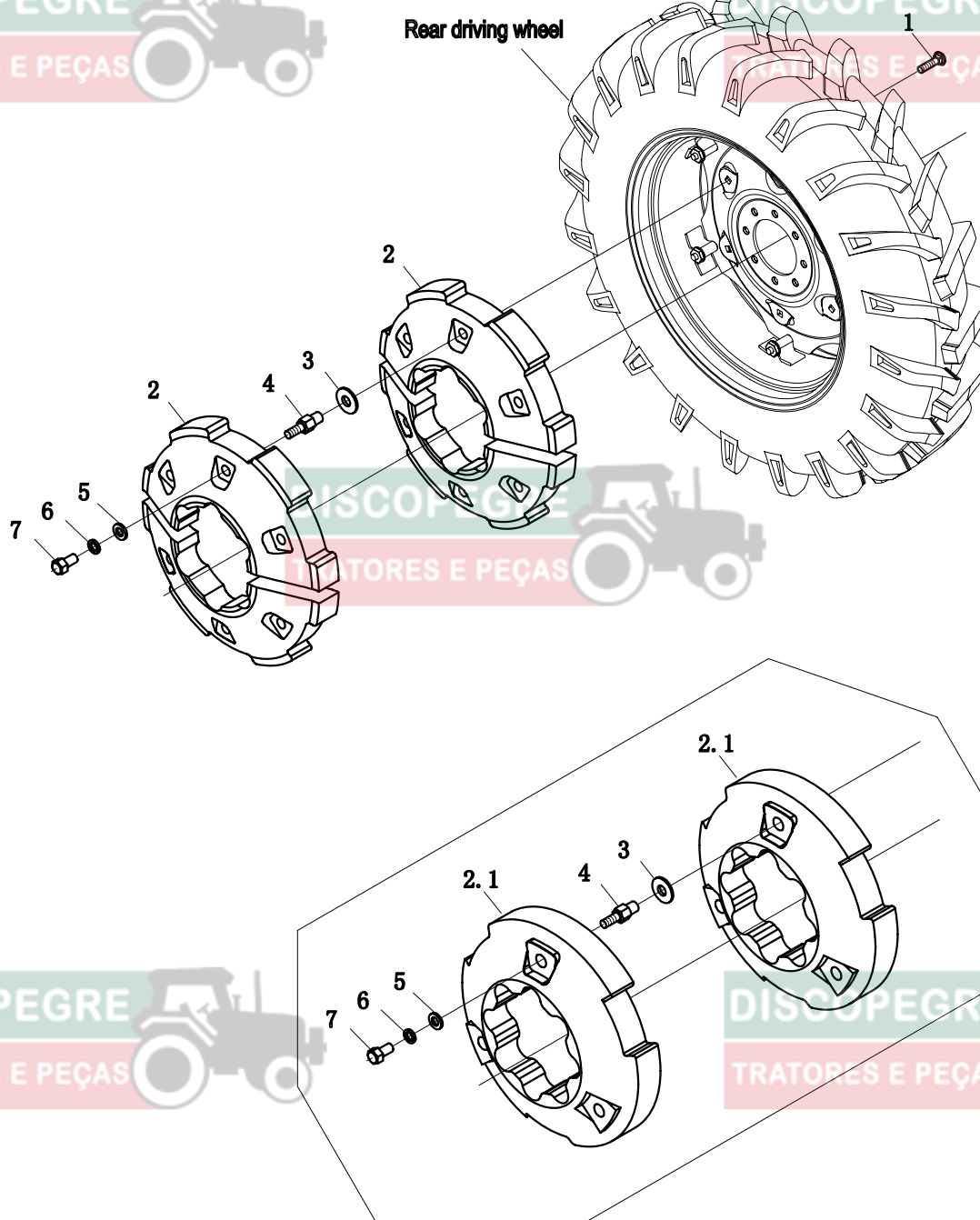
DISCOPEGRE

TRATORES E PEÇAS

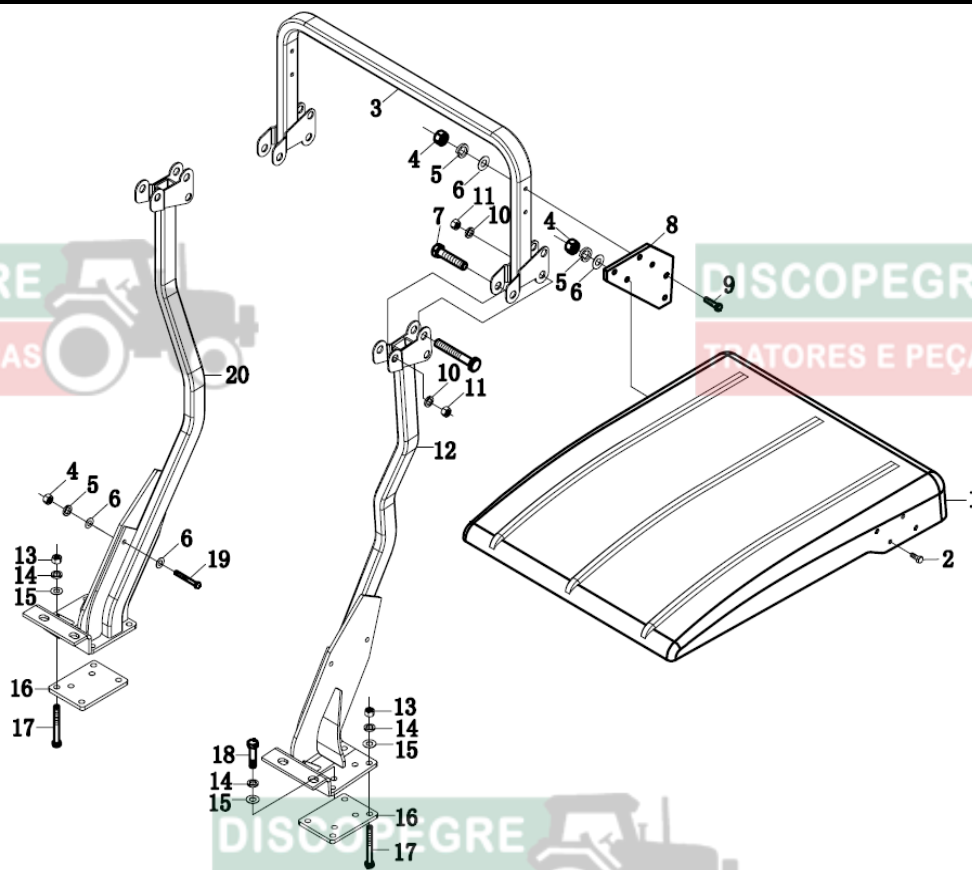
Fuel Tank Assembly



Rear Ballast Assembly (Optional)



ROPS Assembly



DISCOPEGRE

TRATORES E PEÇAS

DISCOPEGRE

TRATORES E PEÇAS

DISCOPEGRE

TRATORES E PEÇAS

DISCOPEGRE

TRATORES E PEÇAS

Safety Sign And Nameplate (II)

22

23

24

25

26

WARNING
Never modify or repair a ROPS because welding, grinding, drilling or cutting any portion may weaken the structure.

CAUTION
TO AVOID PERSONAL INJURY WHEN RAISING OR FOLDING ROPE:

1. Set parking brake and stop engine.
2. Remove any obstruction that may prevent raising or folding of the rope.
3. Do not allow any bystanders.
4. Always perform function from a stable position at the rear of the tractor.
5. Hold the top of the ROPS securely when raising or folding.

27

28

29

30

31

32

WARNING

TO AVOID PERSONAL INJURY: KEEP HANDS AWAY FROM PINCH POINTS OF LIFT ARMS.

33

IMPORTANT
12V DC OUTLET

1. Do not connect a light or load of more than 120 watts.
2. Do not use as a cigarette lighter.
3. Remove plug from socket when not in use.
4. Do not use when wet.

34

IMPORTANT
TO AVOID DAMAGE OF PTO CLUTCH:

Before shifting the PTO shiftlever, fully disengage the clutch.

35

WARNING
TO AVOID PERSONAL INJURY:

1. Attach pulled or towed loads to the drawbar only.
2. Use the 3-point hitch only with equipment designed for 3-point hitch usage.

36

1. Insert the spacer pin into the non-limit hole when tractor works with implements, such as plough and harrow.
2. Insert the spacer pin into the limit hole when tractor works with implements, such as rotary tiller and mower.

37

TO AVOID PERSONAL INJURY:

1. Keep away when the PTO is working.
2. Stop the tractor while connecting the PTO with farm implements.
3. The engaging length should be more than 150mm when the PTO shaft works.
4. When the tractor turns in the field, the mounted farm implement should not be lifted (the joint should be less than 20 degrees), so as to avoid PTO shaft damage.

38

JIANGSU CHANGFA GROUP

Type:		
EEC number:		
Identification number:		
Total permissible mass(*):	to	kg
Permissible front axle load(*):	to	kg
Permissible rear axle load(*):	to	kg
(* Depending on the tires)		
Permissible towable mass:		
-integrated towable mass:	kg	
-independently-braked towable mass:	kg	
-towed mass fitted with an assisted braking system(**):	kg	
Lijia Town, Wujin District, Changzhou, Jiangsu Province, 213176, P.R.China		
Tel: 0086-(0)519-86237001 Fax: 0086-(0)519-86237031		

39

CAUTION
TO AVOID PERSONAL INJURY:

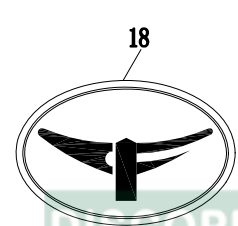
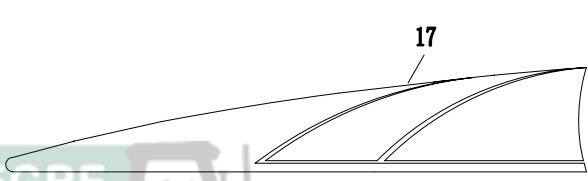
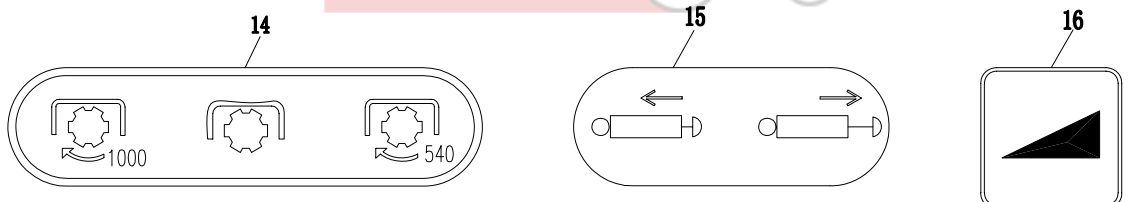
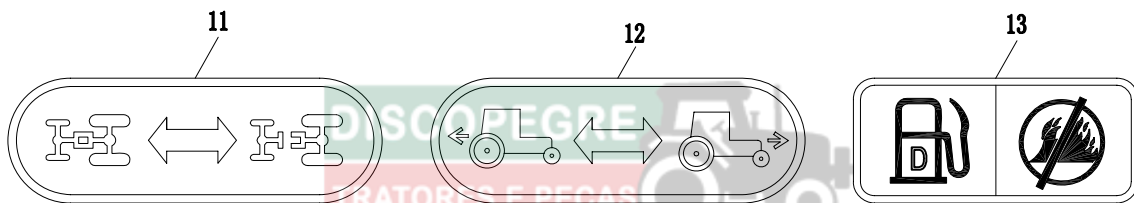
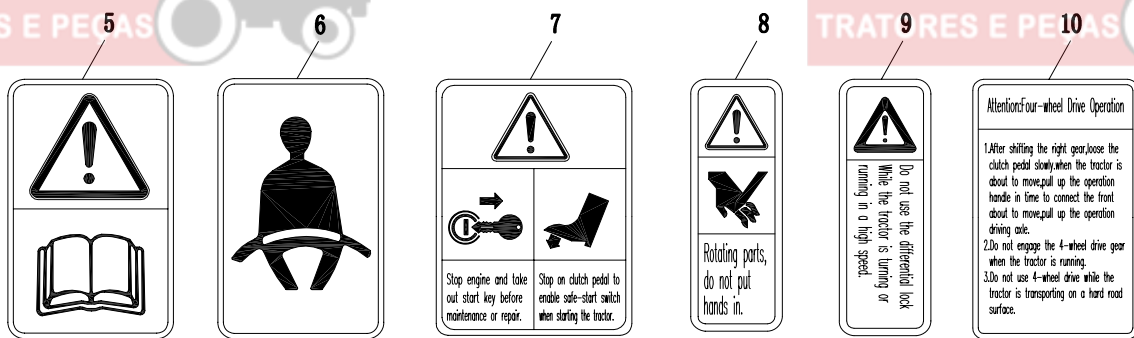
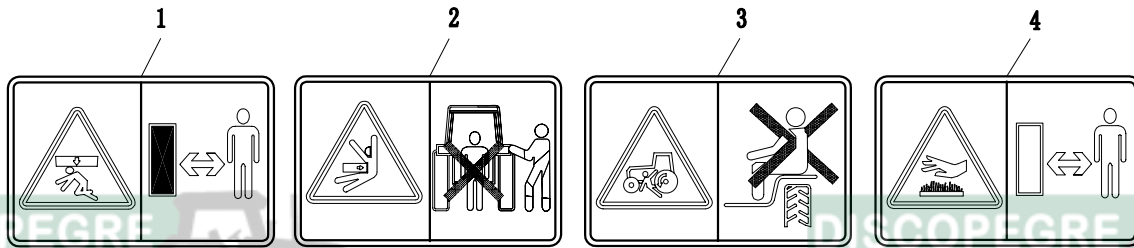
1. Read and understand the operator's manual before operation.
2. Before starting the engine, make sure that everyone is at a safe distance from the tractor and that PTO is OFF.
3. Do not allow passengers on the tractor at any time.
4. Before allowing other people to use the tractor, have them read the operator's manual.
5. Check the tightness of all nuts and bolts regularly.
6. Keep all shields in place and stay away from all moving parts.
7. Slow down for turns or rough roads.
8. On public roads use SWV emblem and hazard lights, if required by local traffic and safety regulations.
9. Fall only from the tractor.
10. Before dismounting, lower the implement to the ground, set the parking brake, stop the engine and remove the key.
11. Securely support tractor and implements before working underneath.

40

Lifting Control Instruction

1. When using position control, lock the draft control lever on the highest rising position first. Rise and lower the implement through position control lever only.
2. When using draft control, lock the position control lever on the highest rising position first. Rise and lower the implement through draft control lever only.

Safety Sign And Nameplate (I)



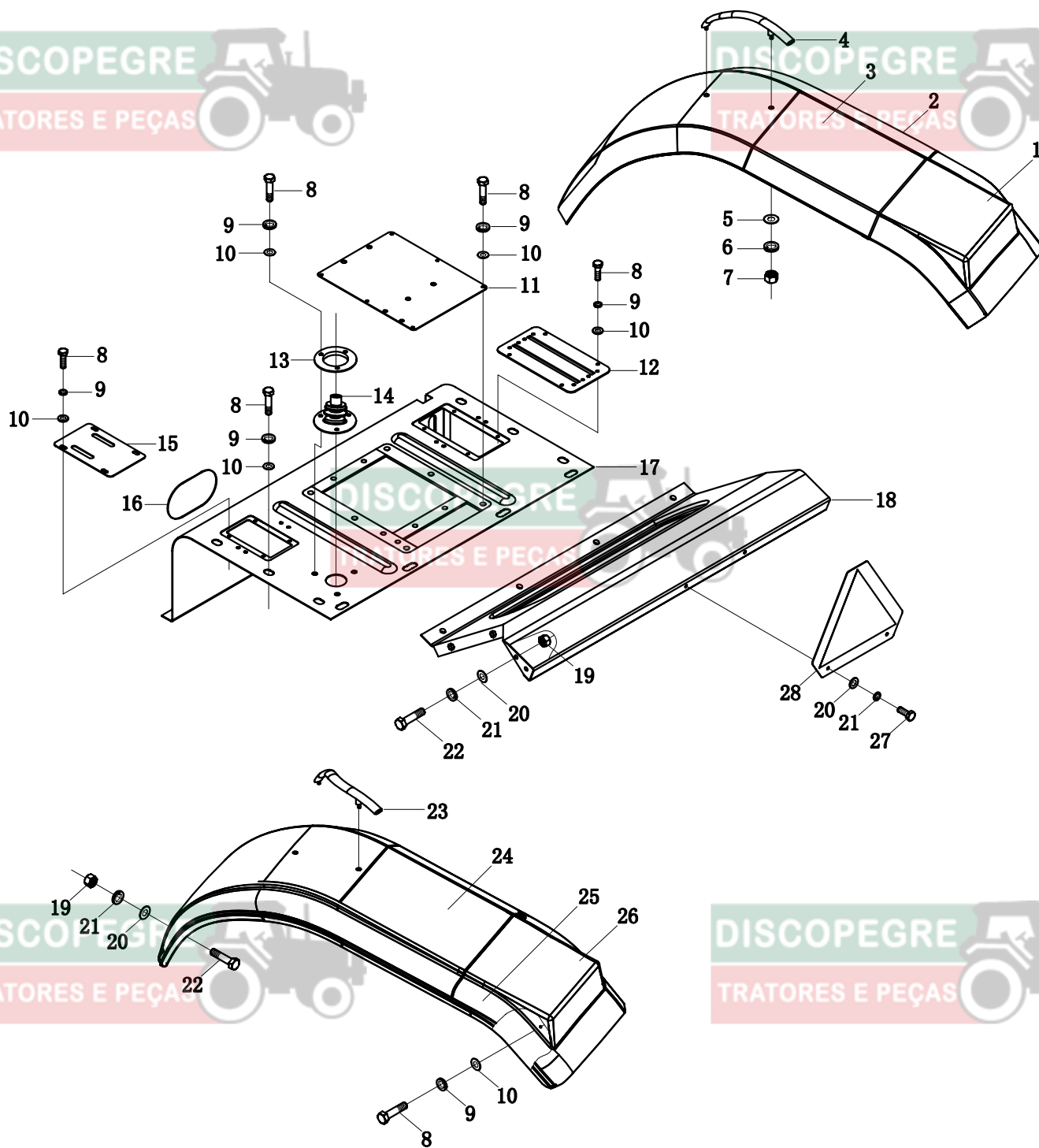
19
CHANGFA

20
5504

Simple Body Assembly (II)

DISCOPEGRE
TRATORES E PEÇAS

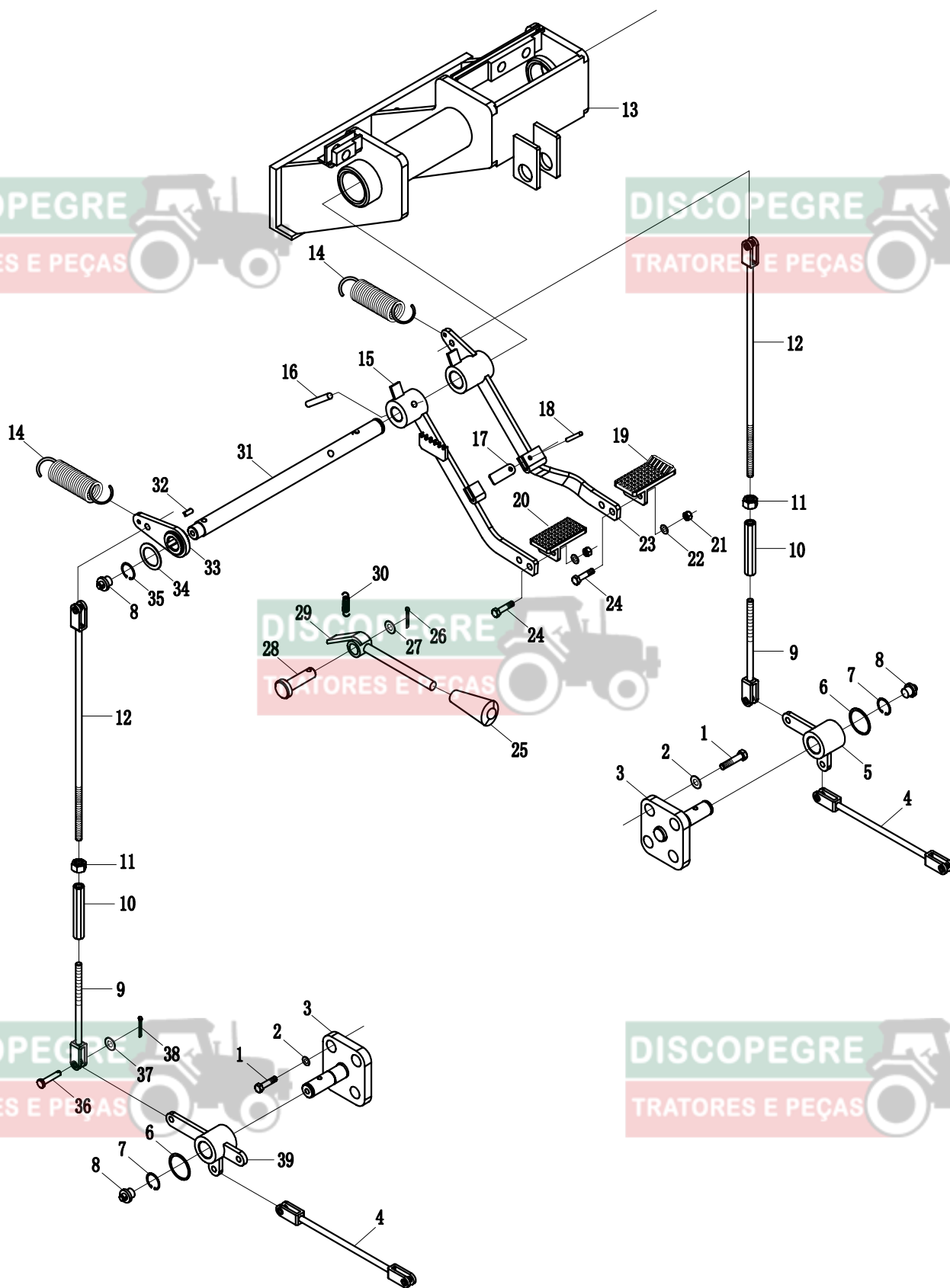
DISCOPEGRE
TRATORES E PEÇAS



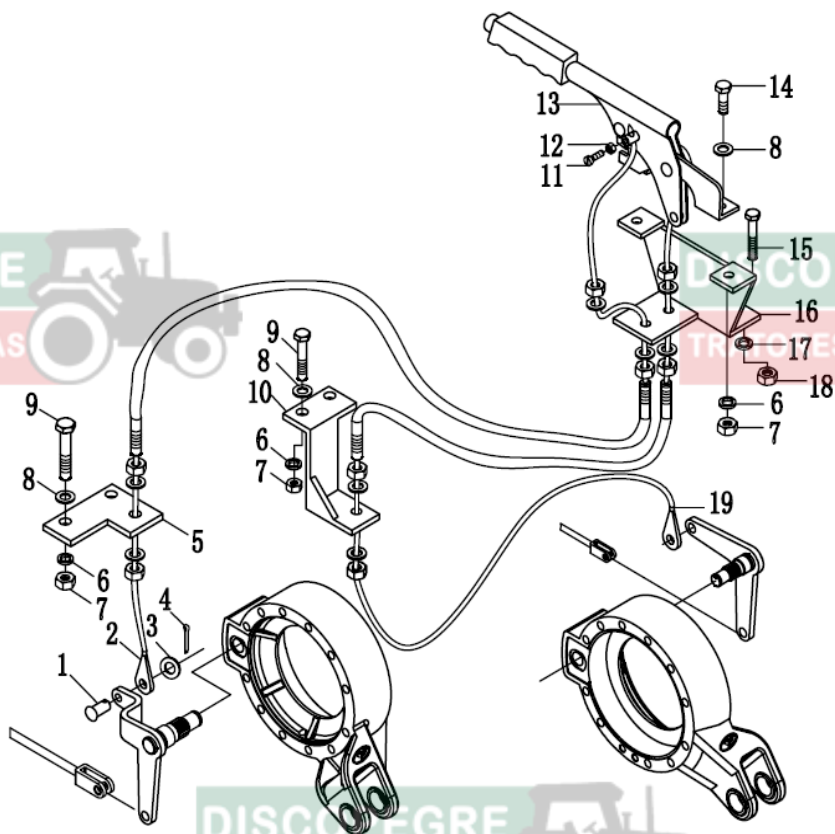
DISCOPEGRE
TRATORES E PEÇAS

DISCOPEGRE
TRATORES E PEÇAS

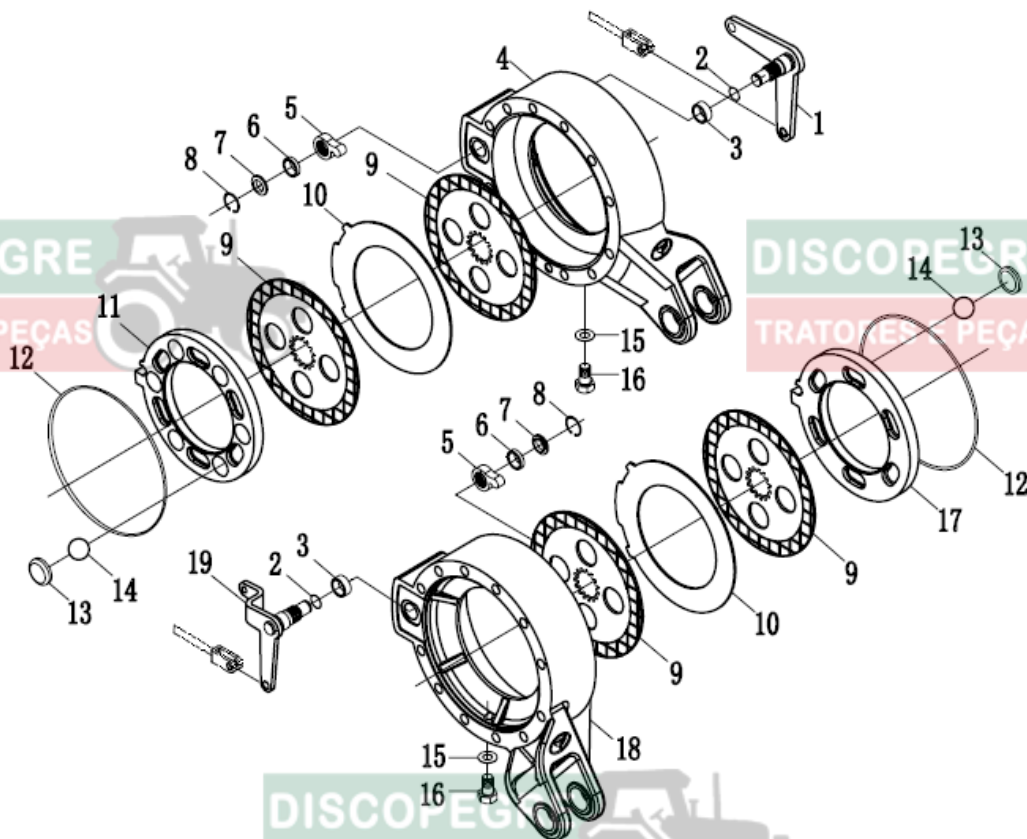
Brake Assembly(I)



Brake Assembly(III)(Optional)



Brake Assembly(II)



DISCOPEGRE

TRATORES E PEÇAS

DISCOPEGRE

TRATORES E PEÇAS

DISCOPEGRE

TRATORES E PEÇAS

DISC

TRAT

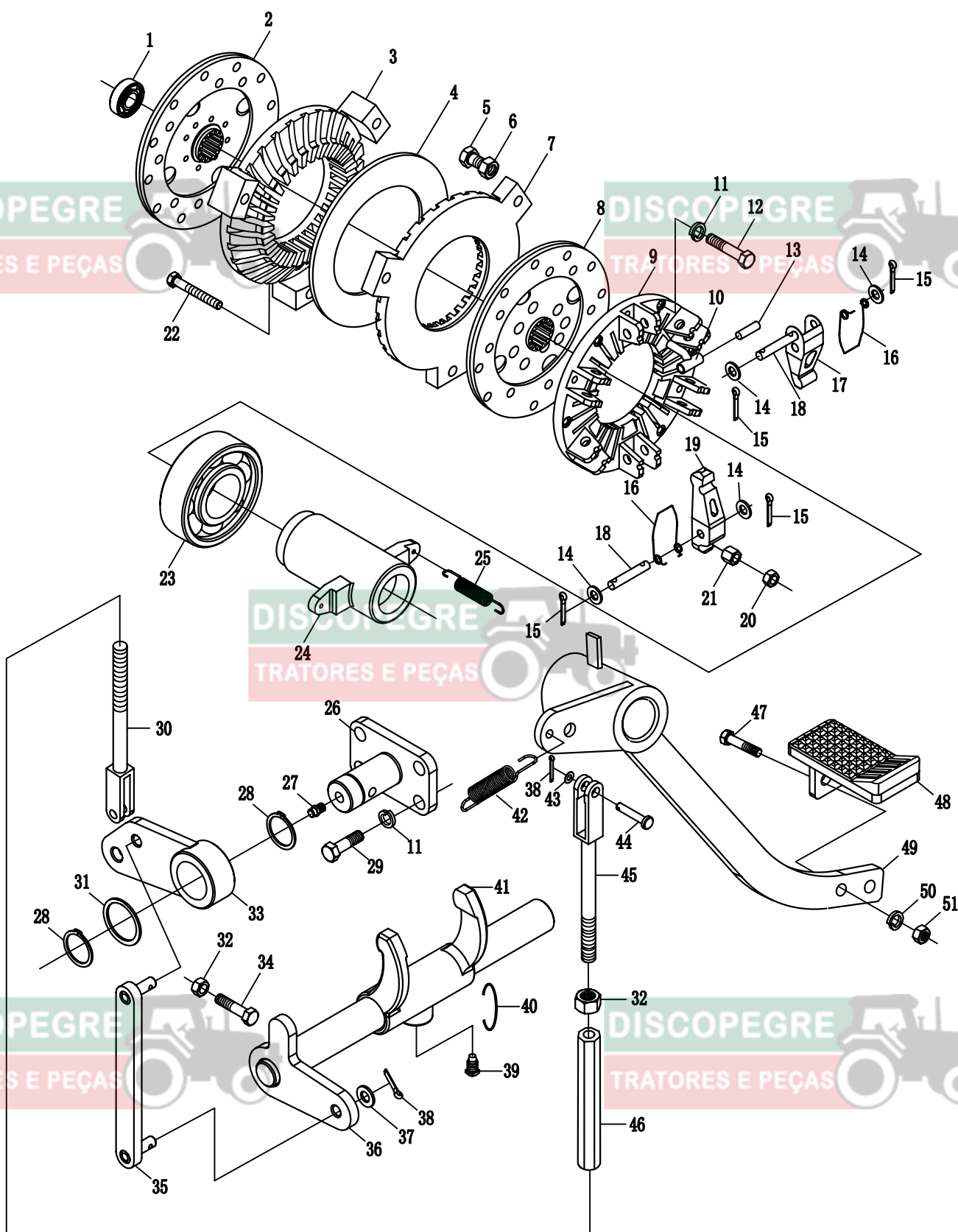
DISCOPEGRE

TRATORES E PEÇAS

DISCOPEGRE

TRATORES E PEÇAS

Clutch Assembly



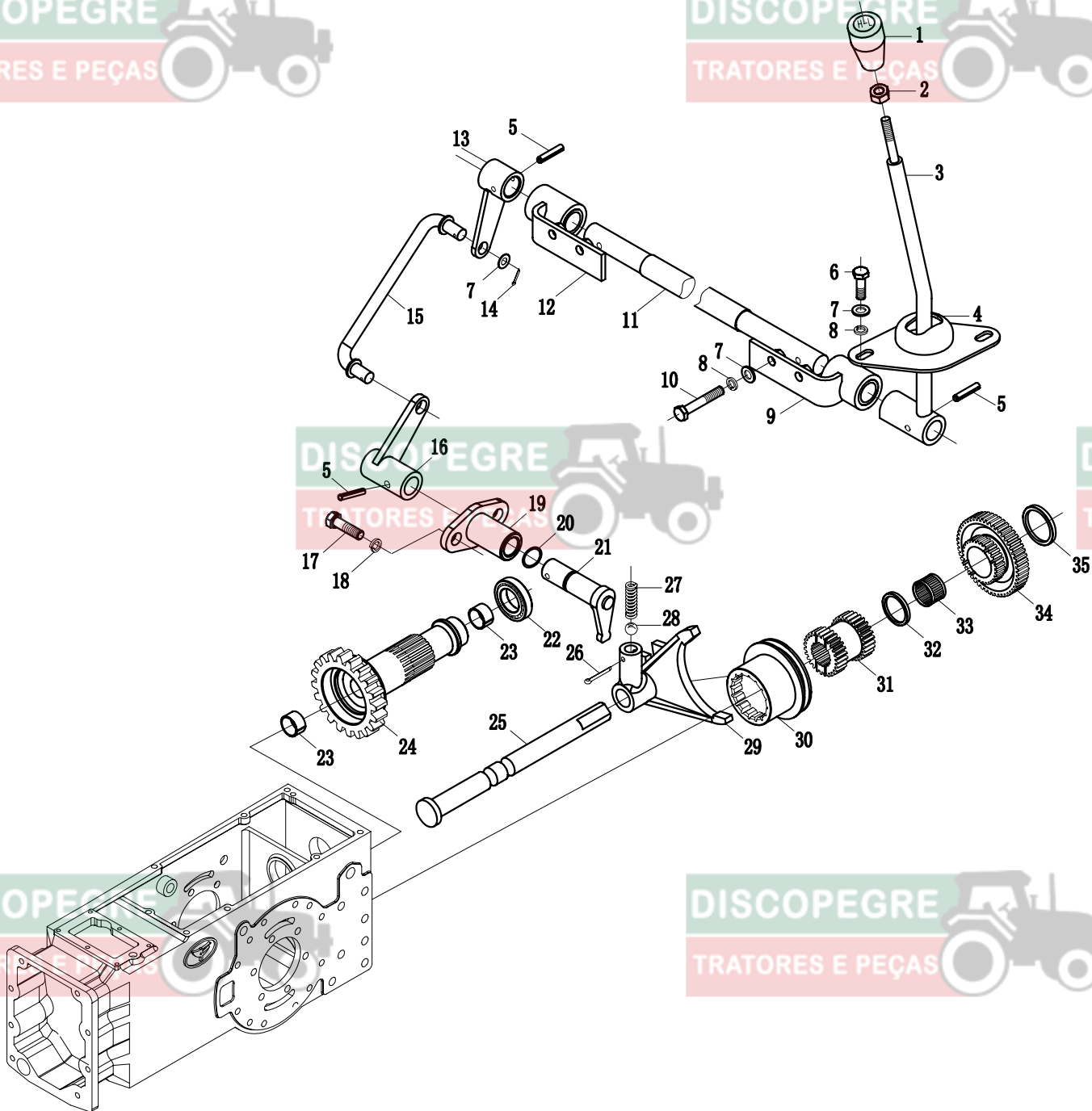
Creeper Assembly(Optional)

DISCOPEGRE

TRATORES E PEÇAS

DISCOPEGRE

TRATORES E PEÇAS



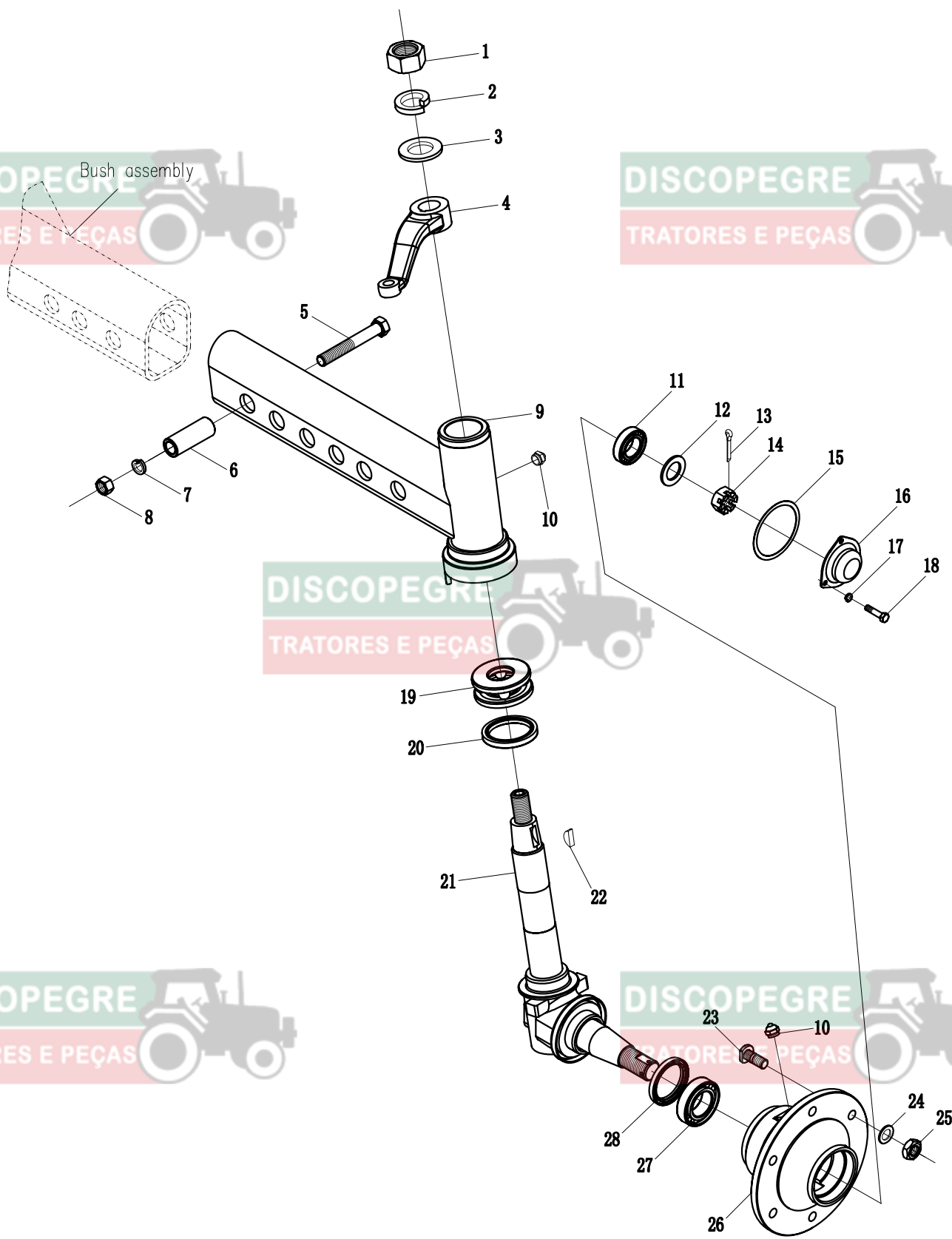
DISCOPEGRE

TRATORES E PEÇAS

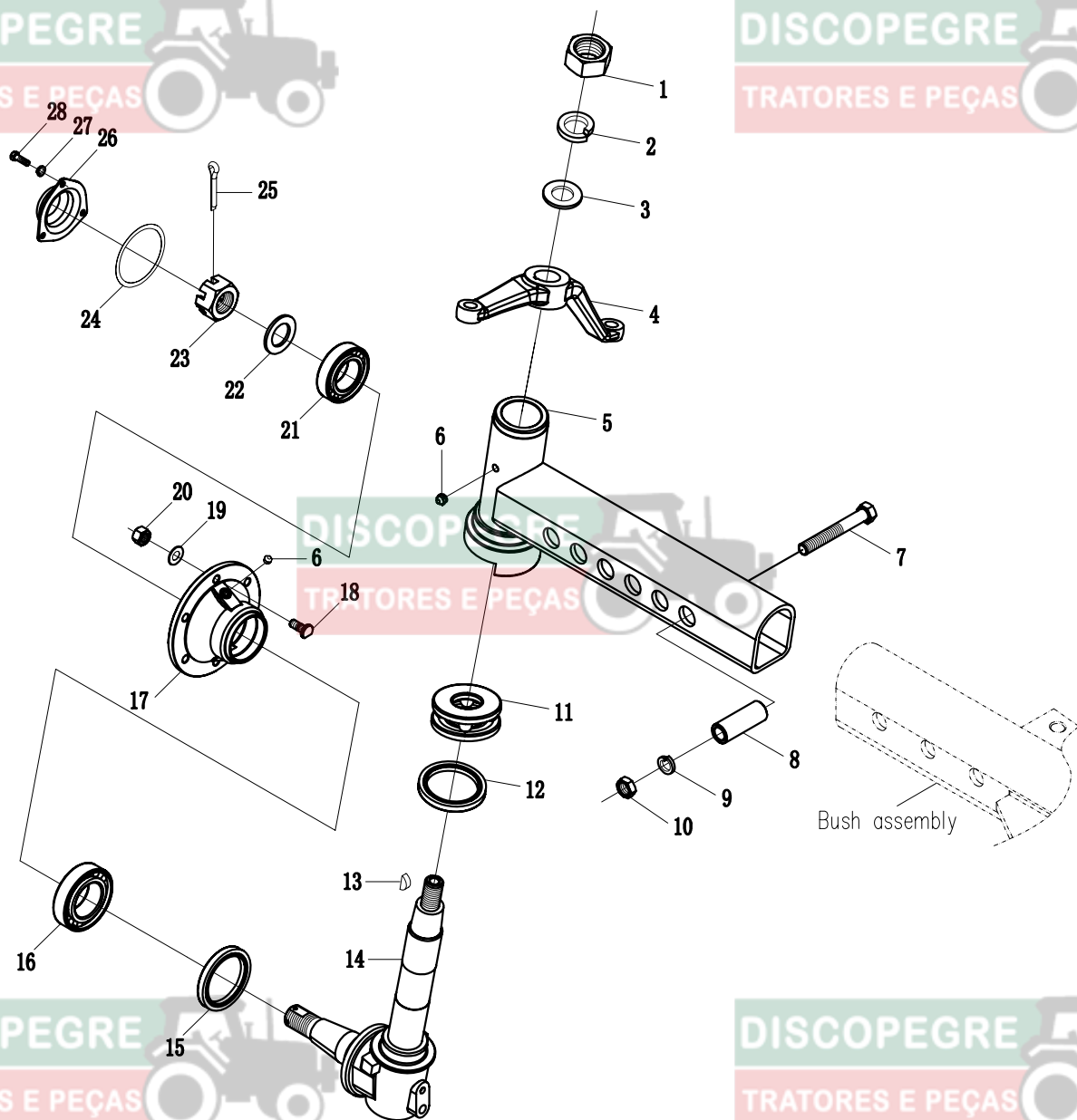
DISCOPEGRE

TRATORES E PEÇAS

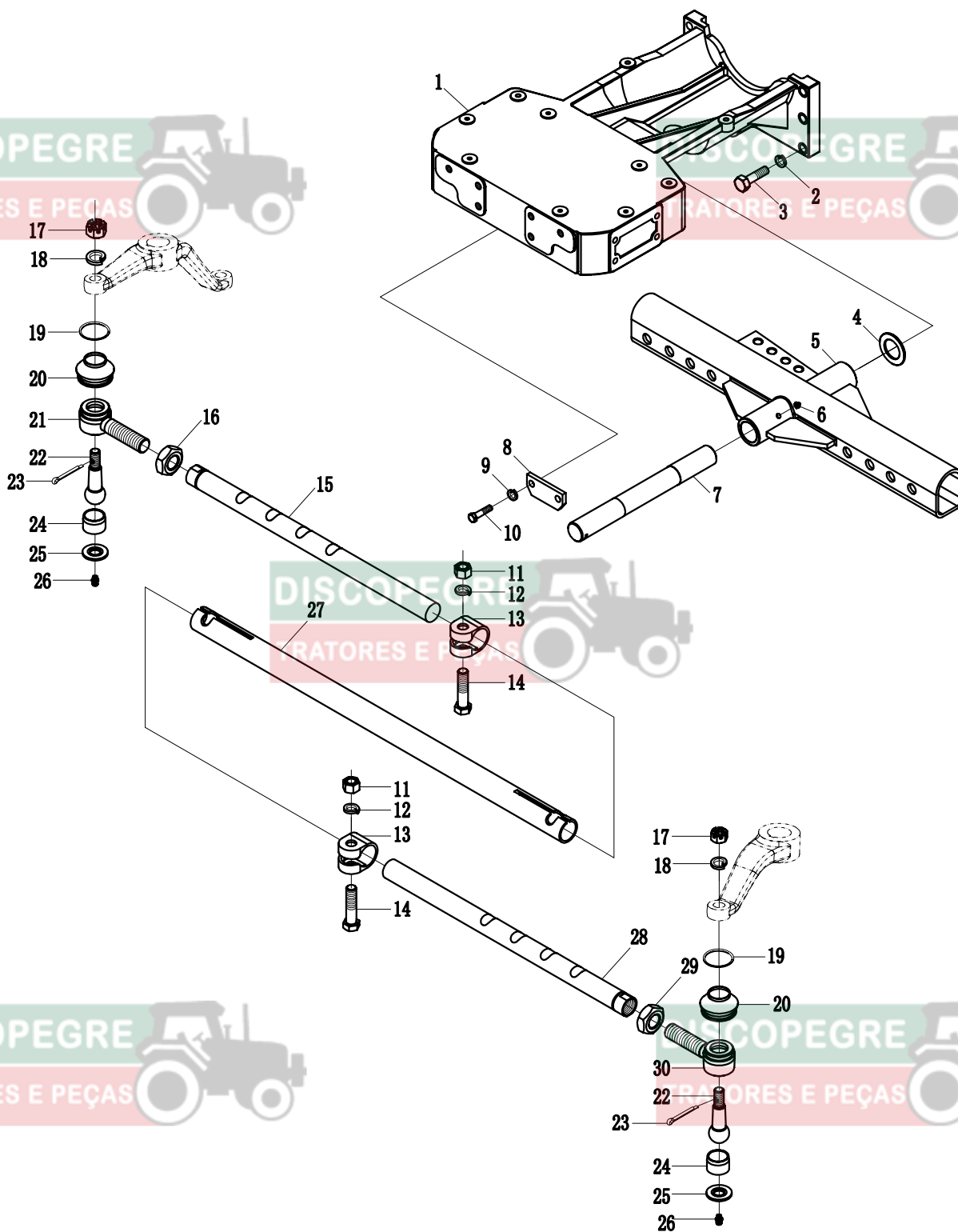
Front Axle Assembly (III)



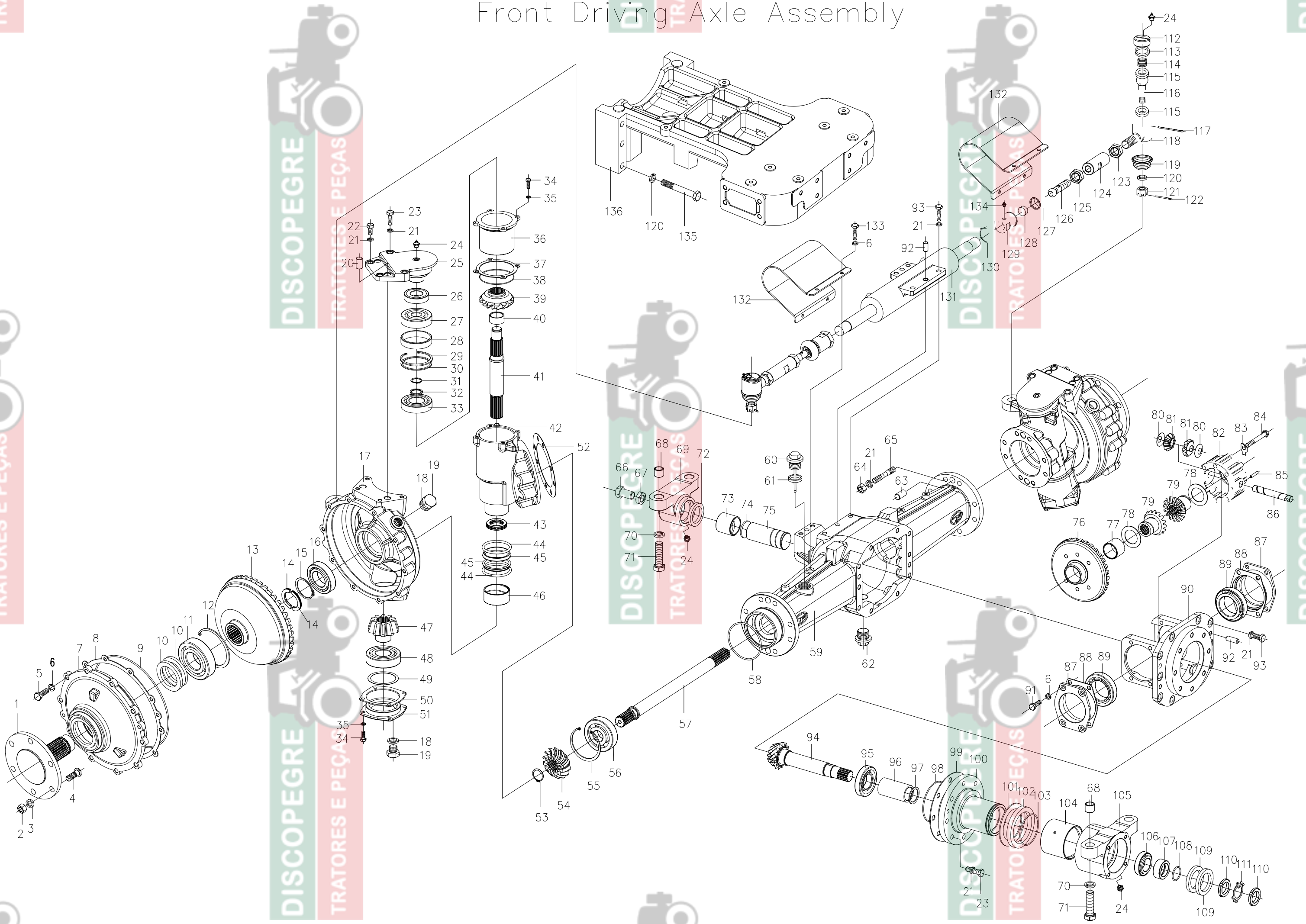
Front Axle Assembly (II)



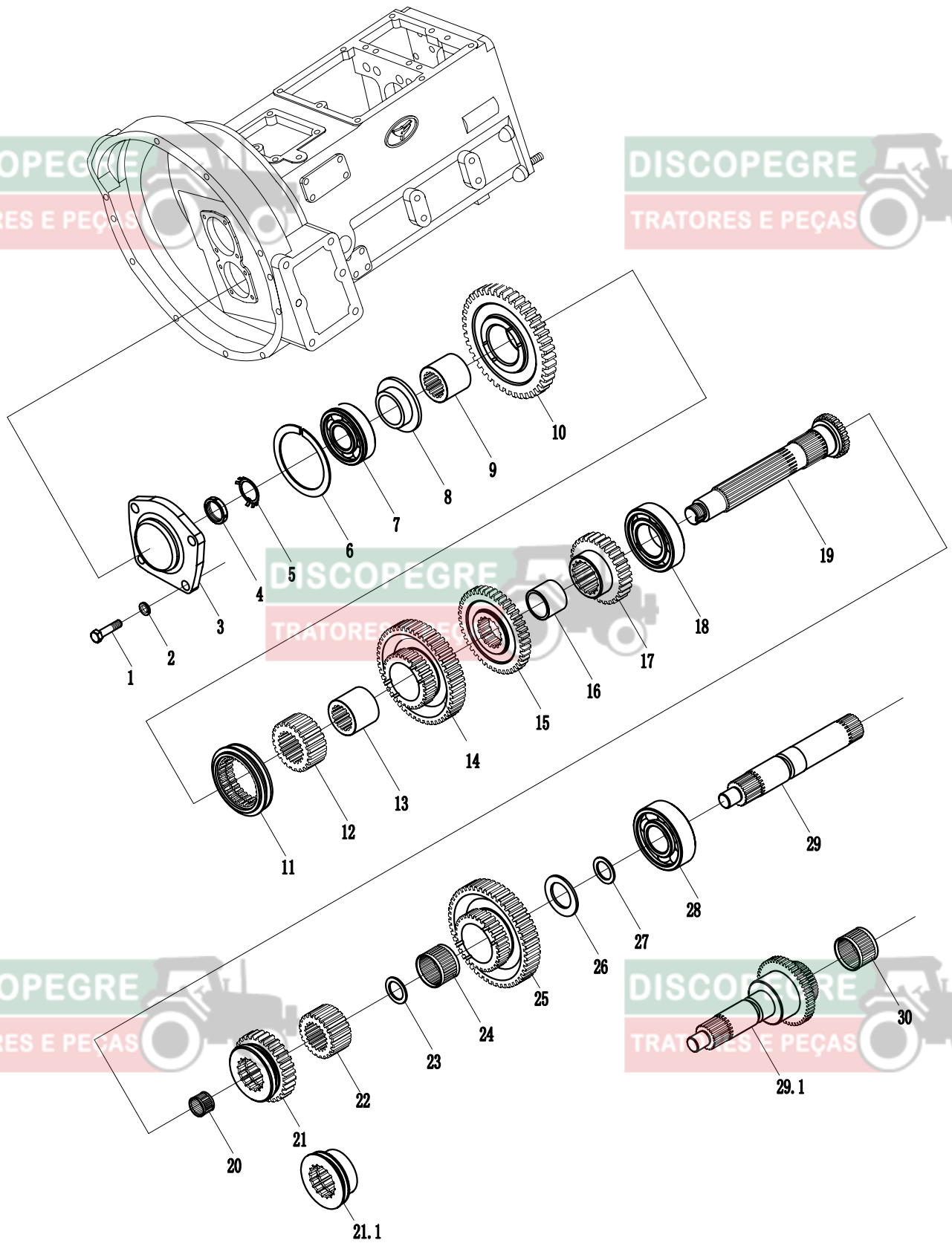
Front Axle Assembly(I)



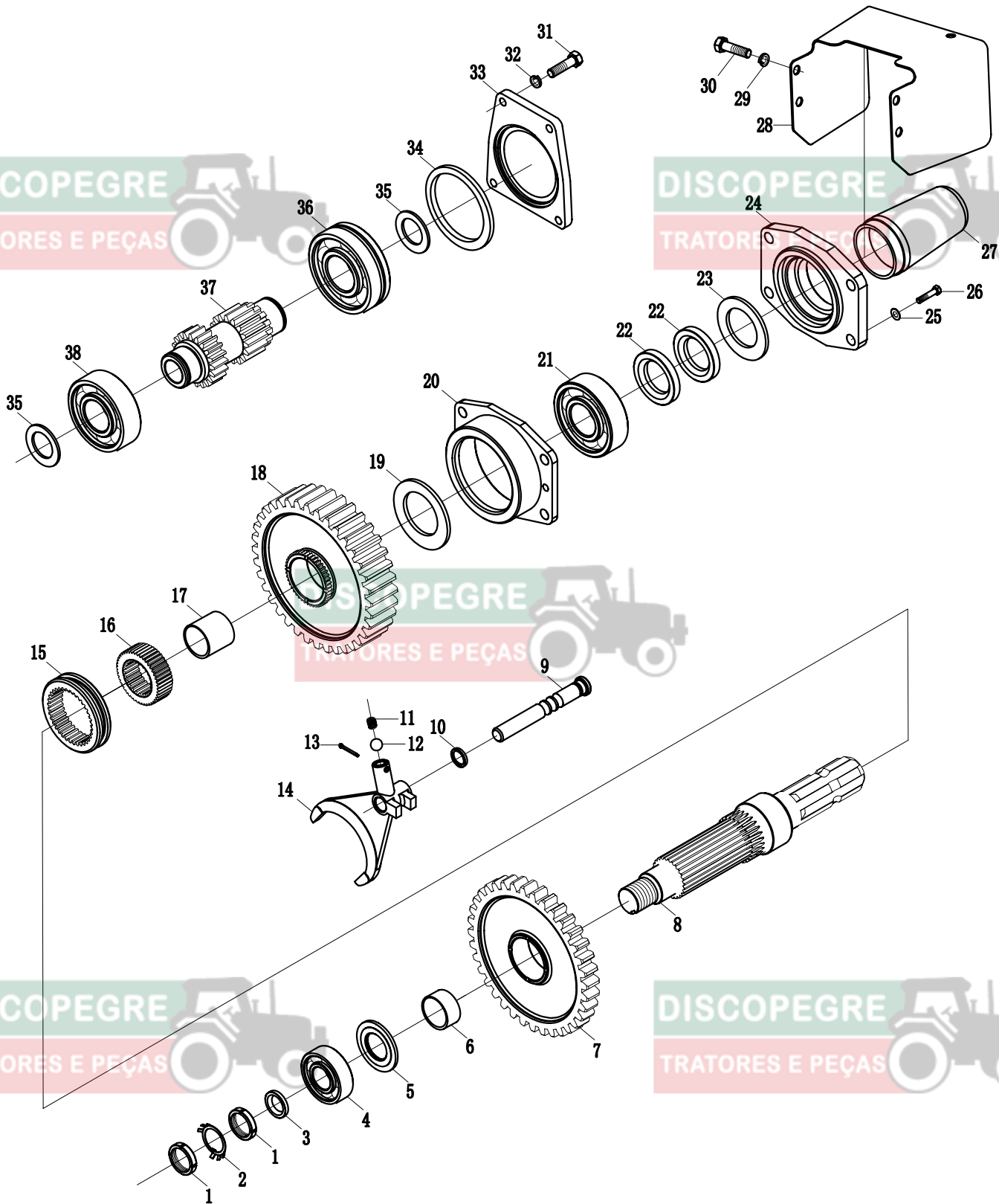
Front Driving Axle Assembly



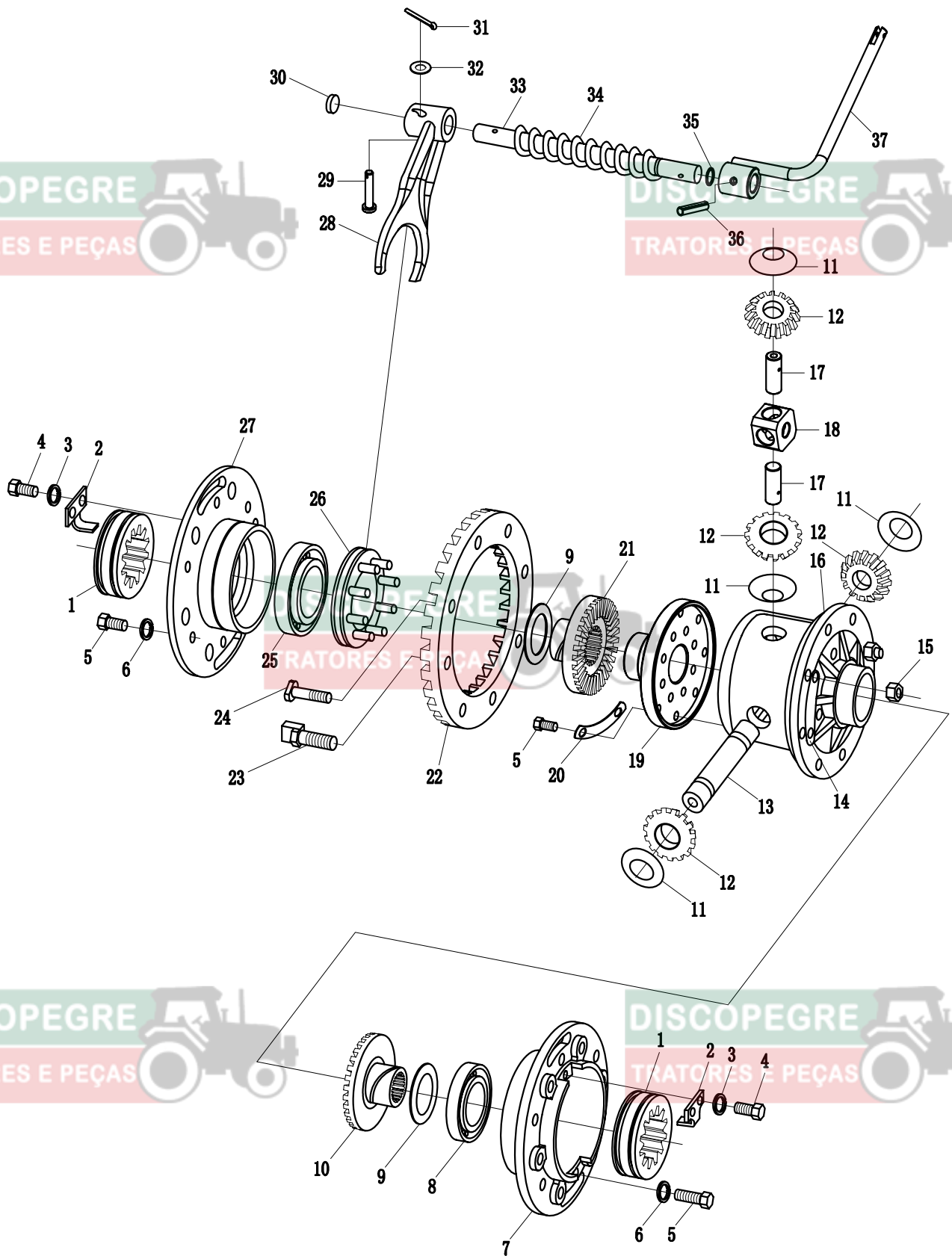
Gearbox Assembly (IV)



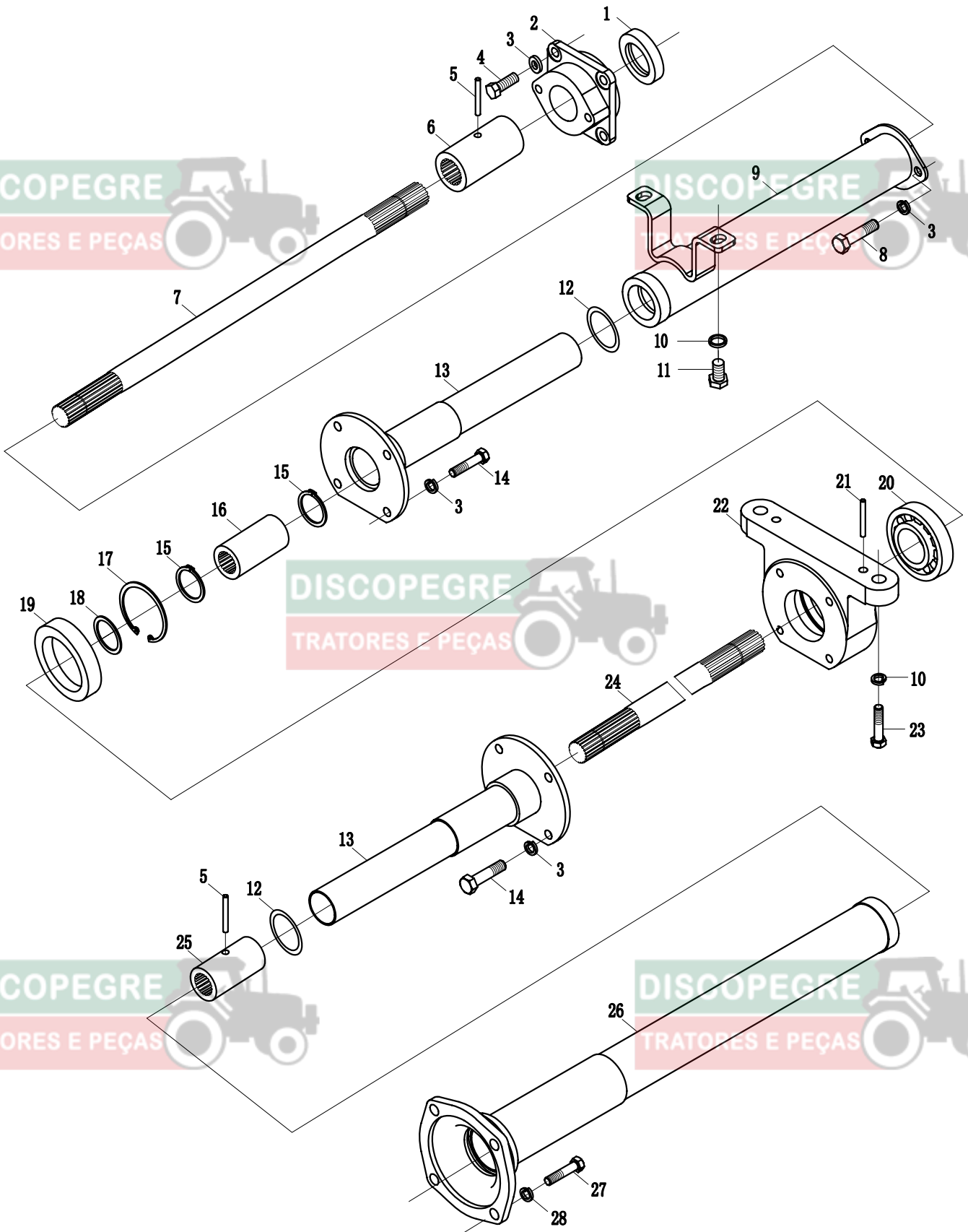
PTO Shaft Assembly (III)



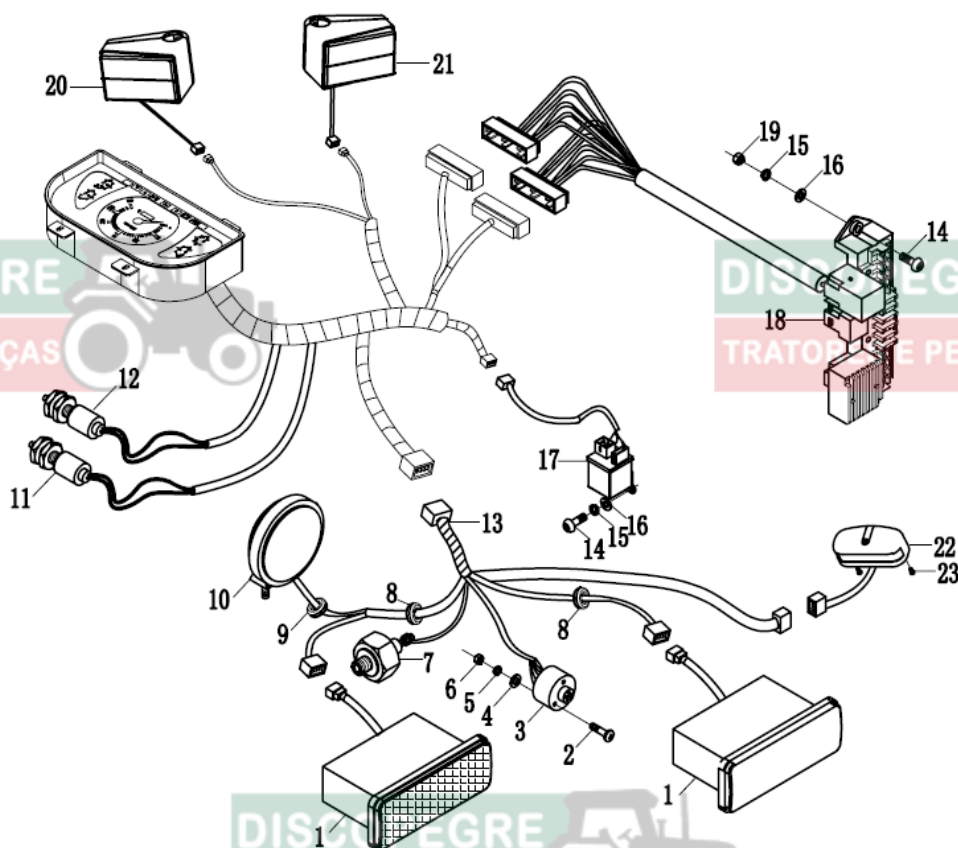
Rear Axle Assembly (II)



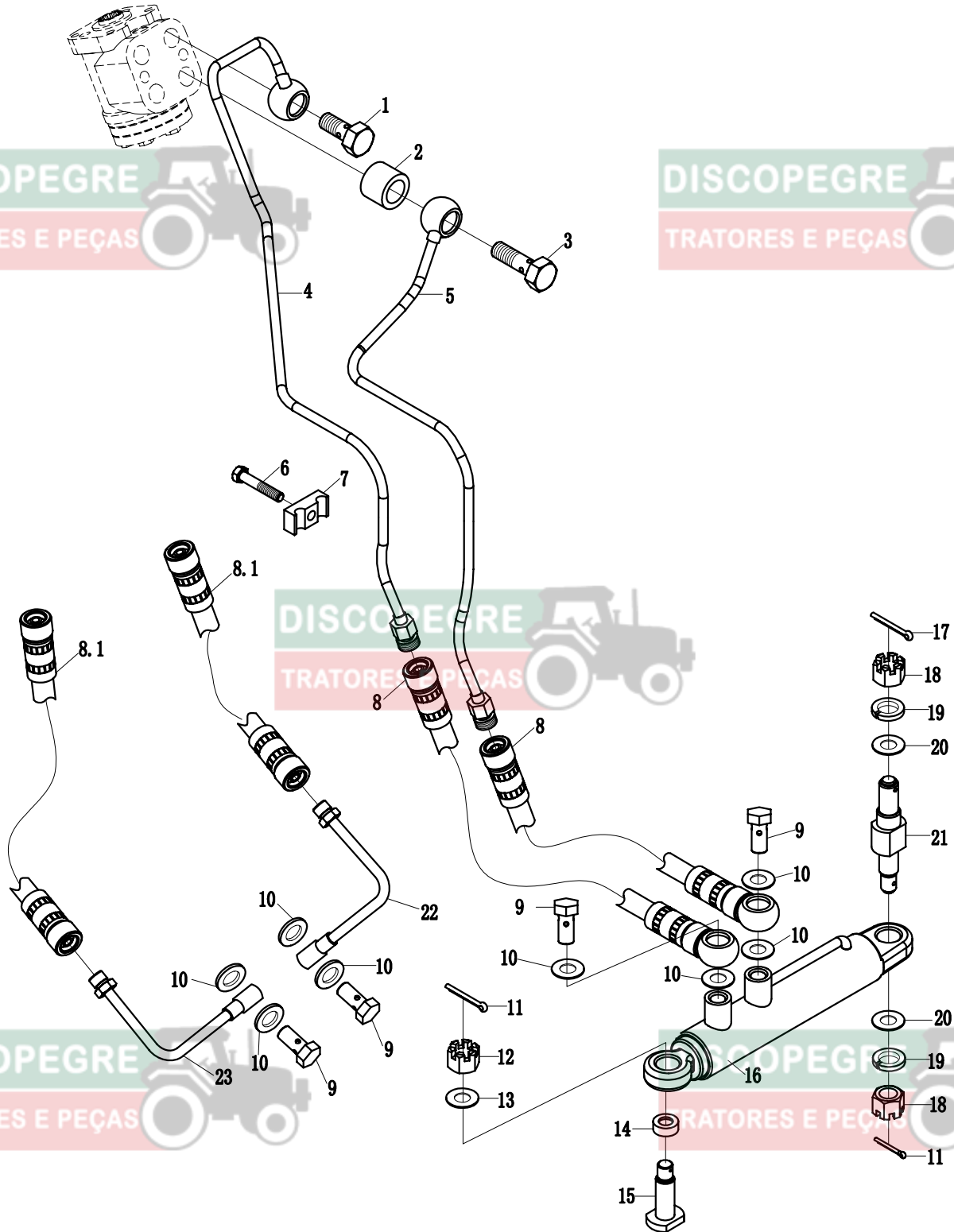
Transfer Case Assembly(II)



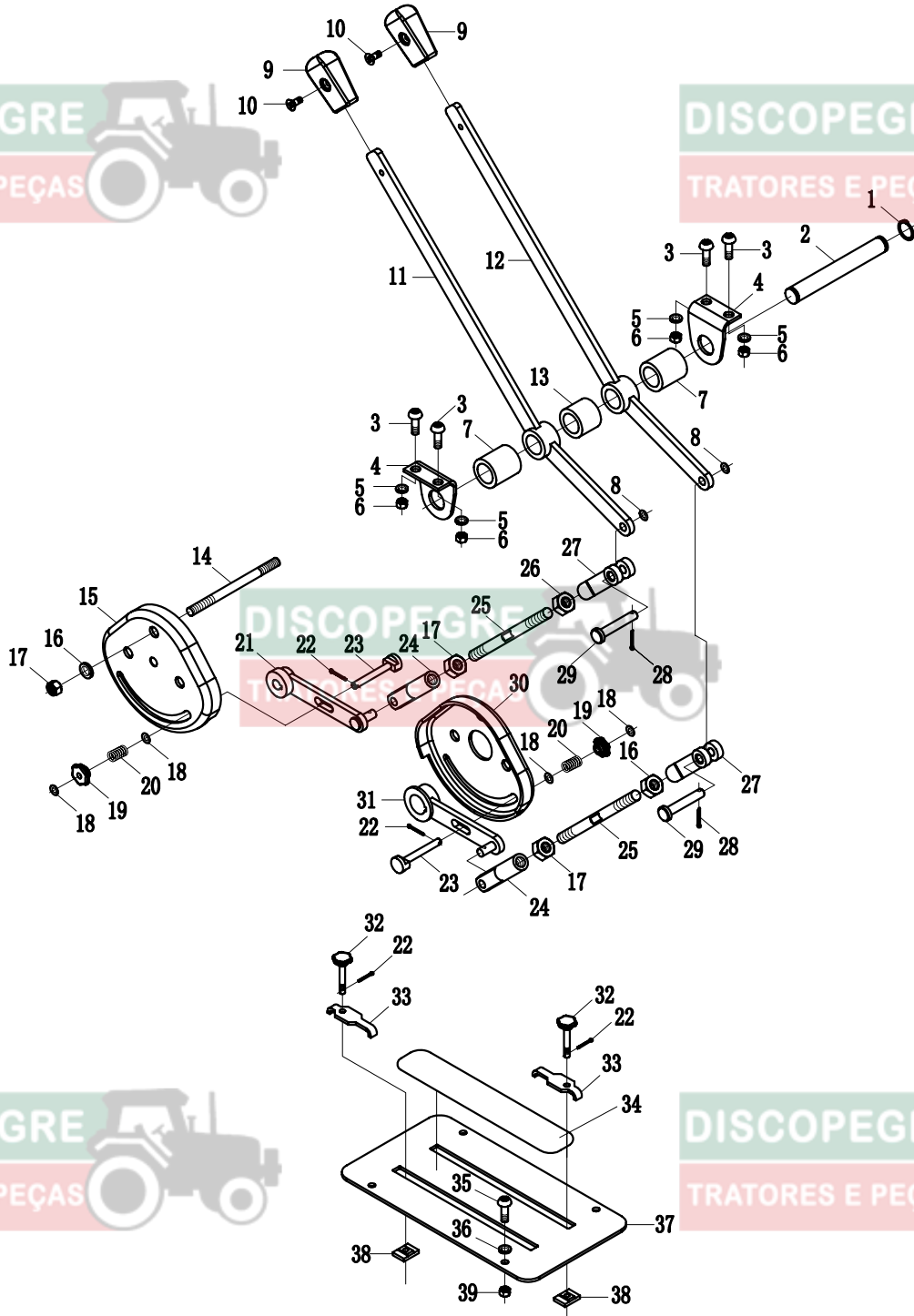
Electrical System Assembly(II)



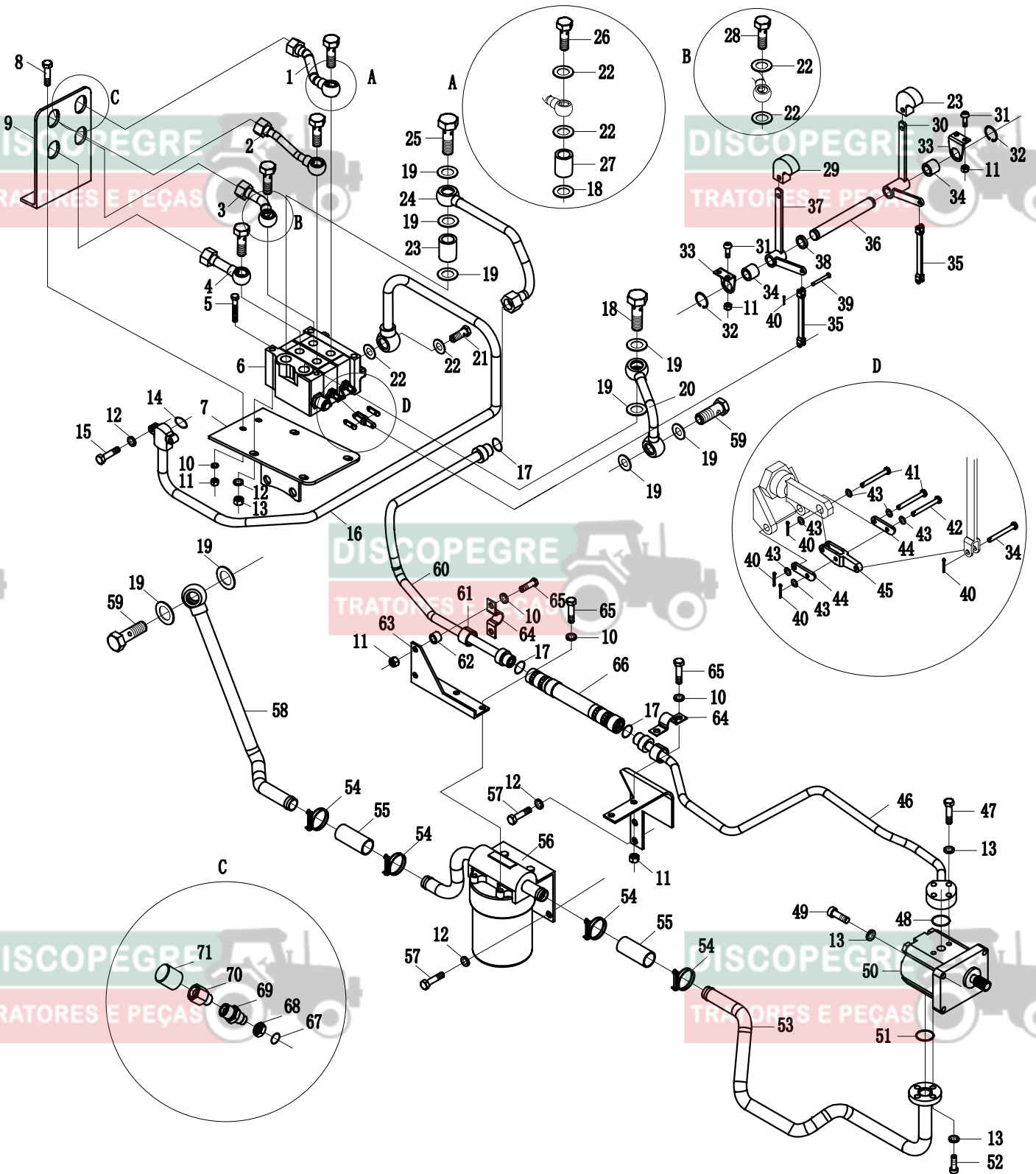
Hydraulic Steering Wheel Assembly(II)



Lifter Assembly (II)



Oil Pump/Pipe & Multit-way Valve Assembly(Optional)



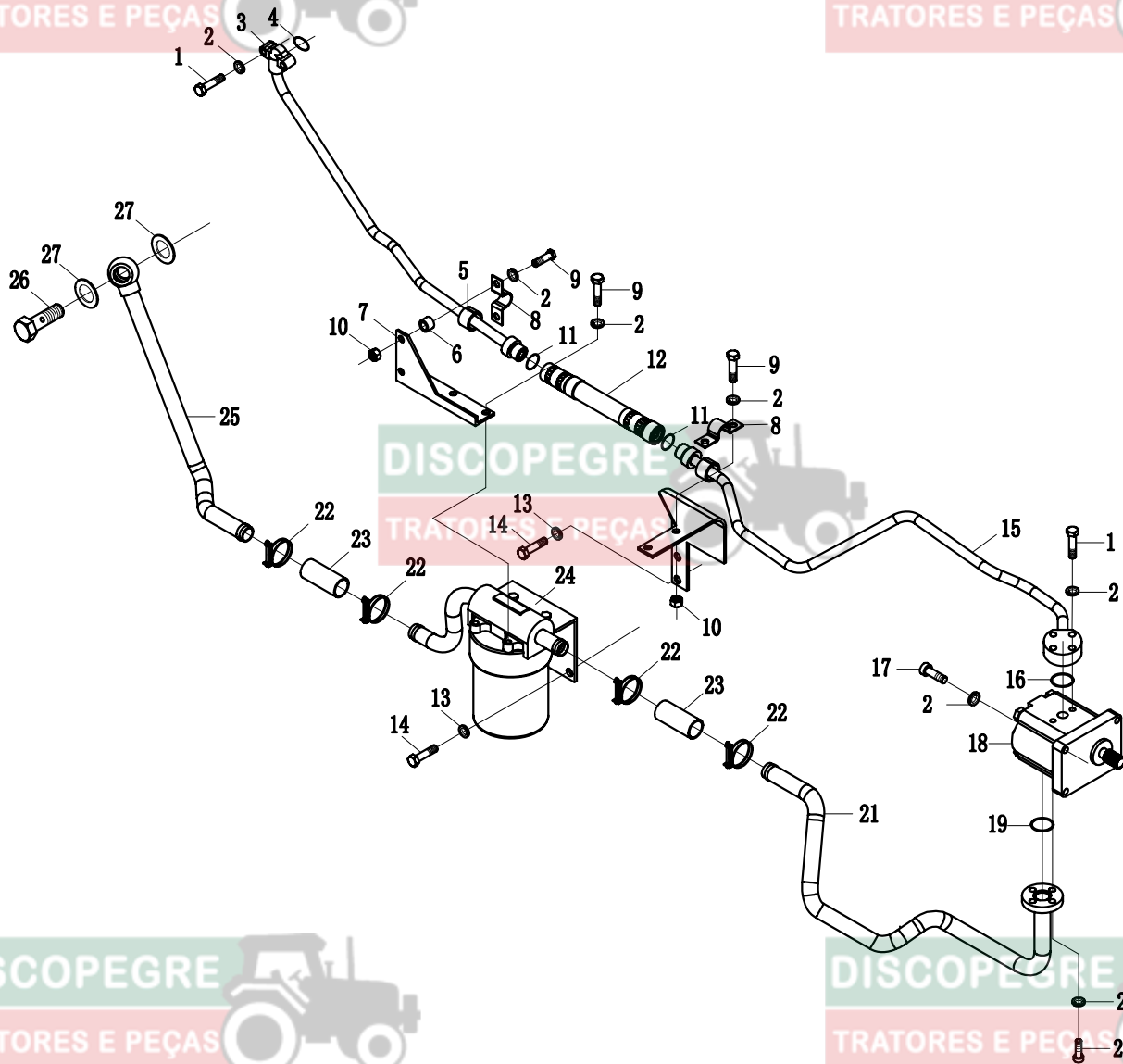
Oil Pump/Pipe Assembly

DISCOPEGRE

TRATORES E PEÇAS

DISCOPEGRE

TRATORES E PEÇAS



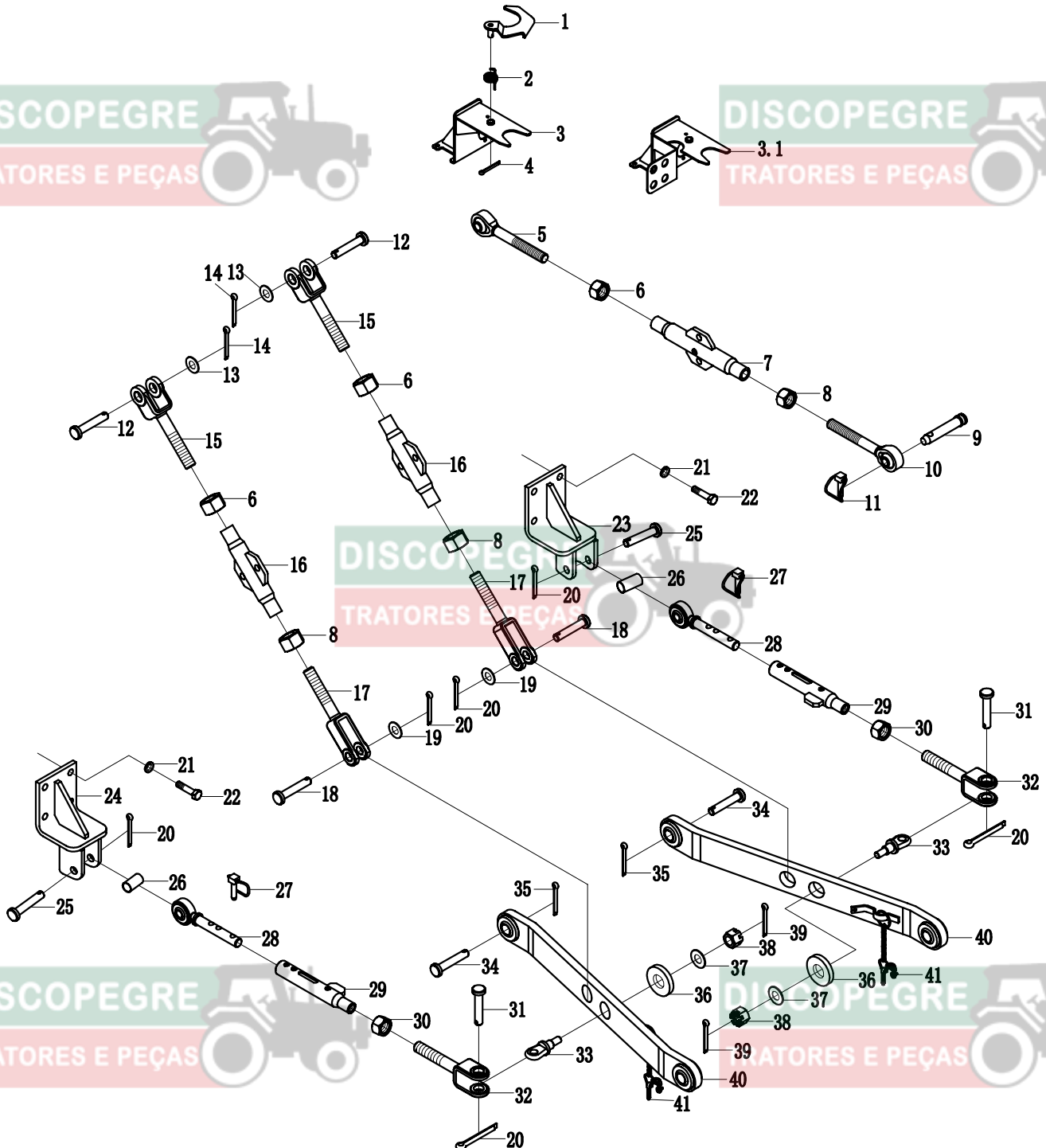
DISCOPEGRE

TRATORES E PEÇAS

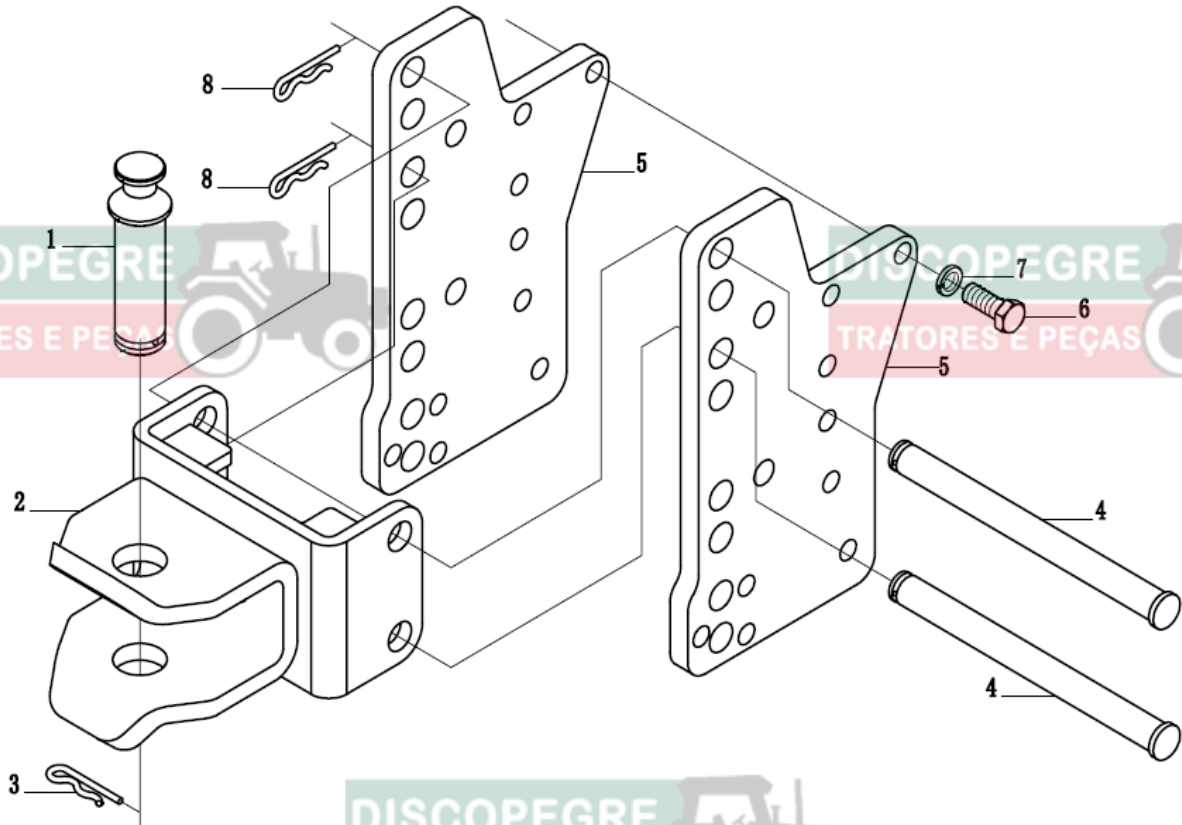
DISCOPEGRE

TRATORES E PEÇAS

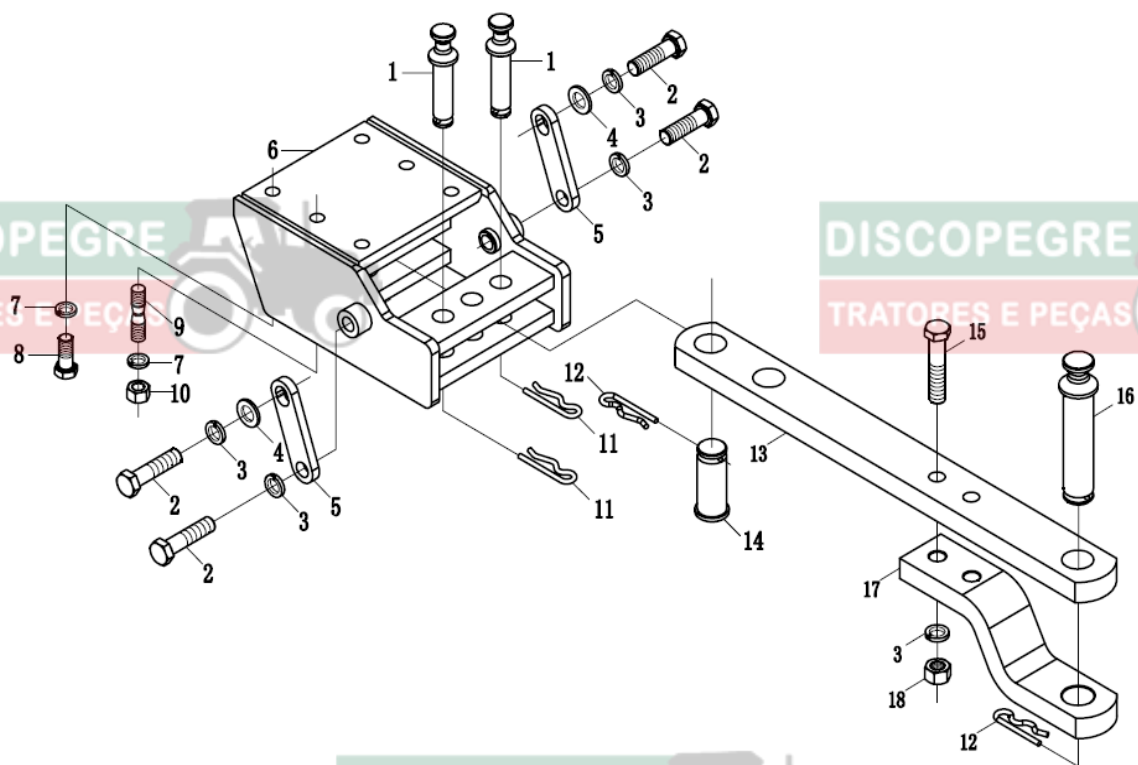
Suspension Machanism Assembly



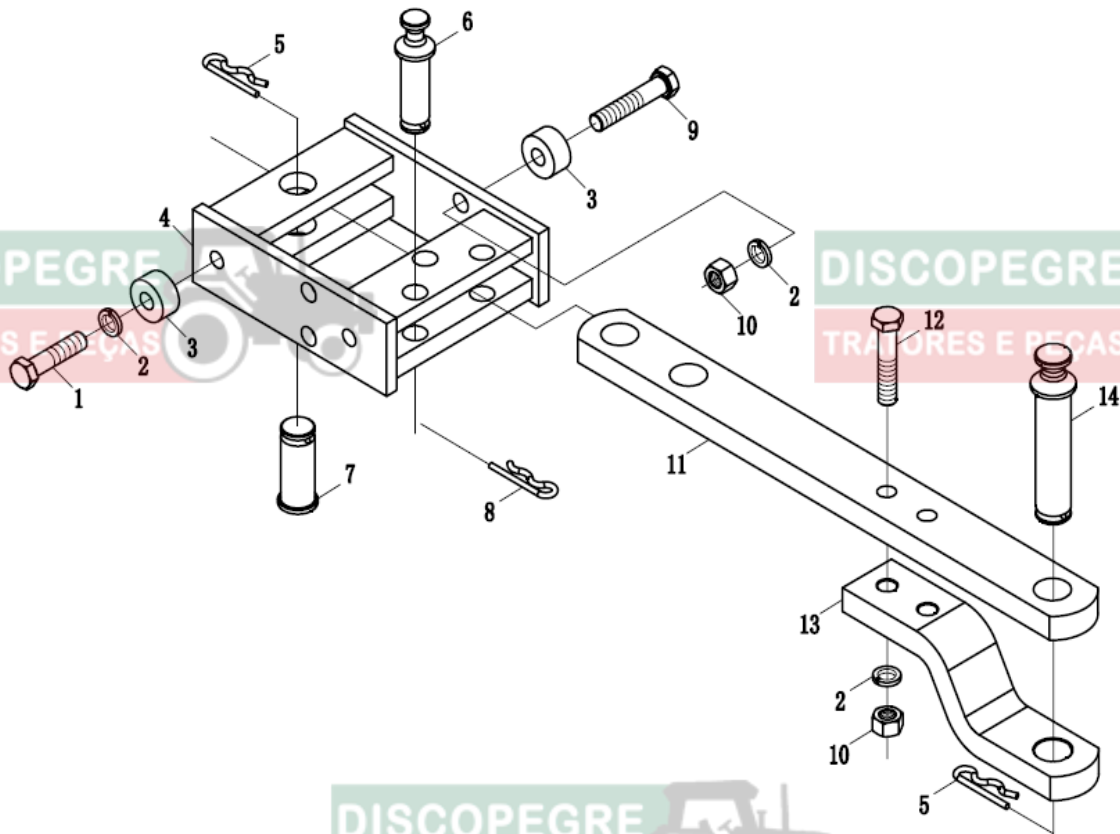
Towing Mechanism Assembly



Traction structure Assembly



Traction structure Assembly



DISCOPEGRE
TRATORES E PEÇAS

DISCOPEGRE
TRATORES E PEÇAS

DISCOPEGRE
TRATORES E PEÇAS

DISCO
TRAT

DISCOPEGRE
TRATORES E PEÇAS

DISCOPEGRE
TRATORES E PEÇAS

Preface

Dear users:

We express our sincere gratitude for your concerns and preferences for our products made in Jiangsu. Changfa Industrial Group Co., Ltd .The Group will always provide you the best engine, with the advantage of low noises, economy, quick starting at low atmosphere temperature, compact size, and high reliability and so on.

In order to facilitate the searching, this catalogue can offer you not only the ease in understanding the structure and assembly of all components, but also the convenience in ordering parts. This catalogue covers models of CF490BT and CF495T series engines, part number, description and quantity per engine.

Please pay attention to the following remark before you order the components:

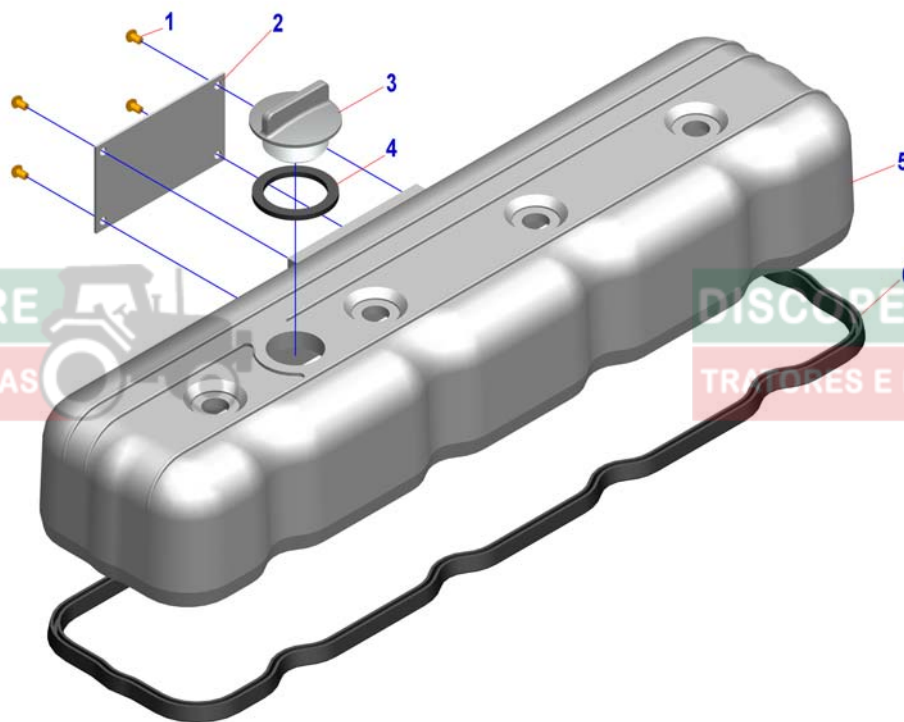
1. Model, exworks number and exworks date of the engine;
2. Part number, description and quantity of the demanded components.

The components of this catalogue are compiled according to the design version of August. 2007 . According to the change of market requirements, the structure and numbers of some parts are subject to change without notice, please pay attention to this .

No part of this catalogue may be reproduced, published, or transmitted in any form or by any means without the prior written consent of Jiangsu Changfa Industrial Group Co.,Ltd.

CONTENT

1.Cylinder head cover assembly.....	1
2.Cylinder head assembly.....	2
3.Cylinder block assembly.....	4
4.Timing gear casing assembly.....	7
5.Crank Institution assembly.....	10
6.Crankshaft assembly.....	11
7.Intake and exhaust system.....	12
8.Lubricating system.....	13
9.Cooling system.....	15
10.Fuel system.....	17
11.Electrical system.....	18
12.Air compressor system.....	19



DISCOPEGRE
TRATORES E PEÇAS

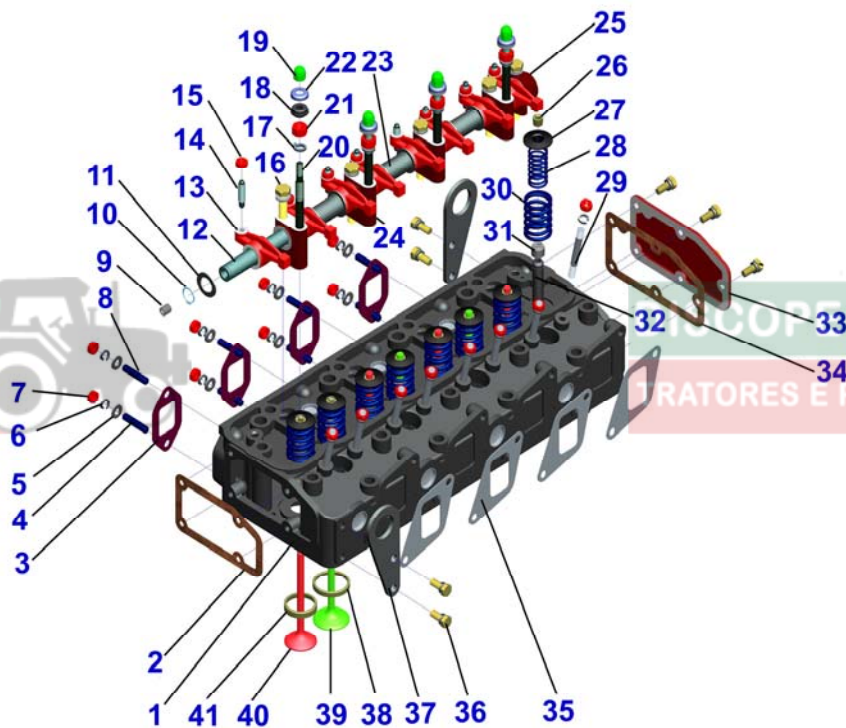
DISCOPEGRE
TRATORES E PEÇAS

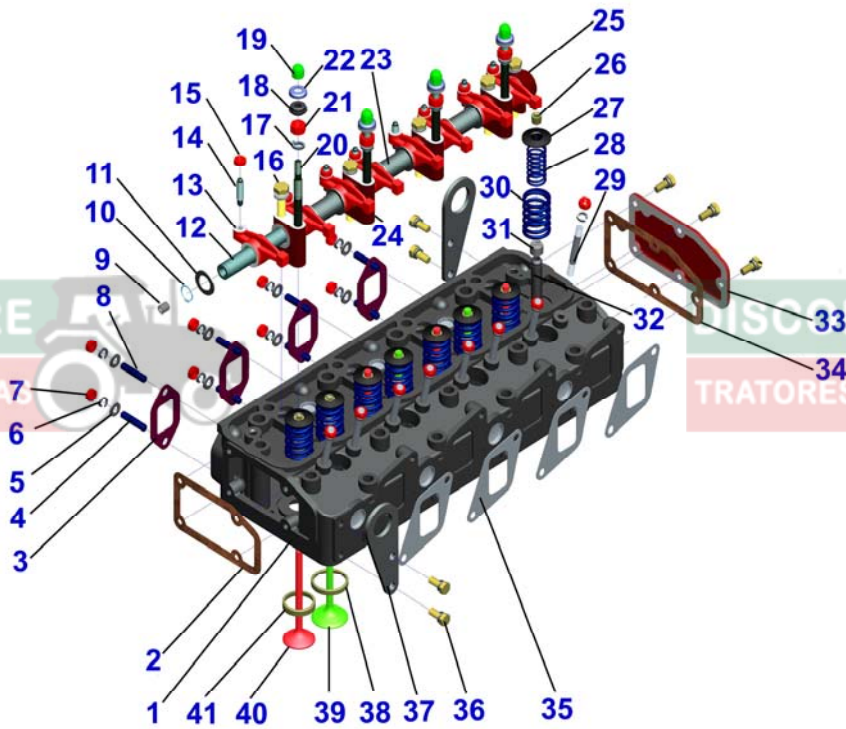
DISCOPEGRE
TRATORES E PEÇAS

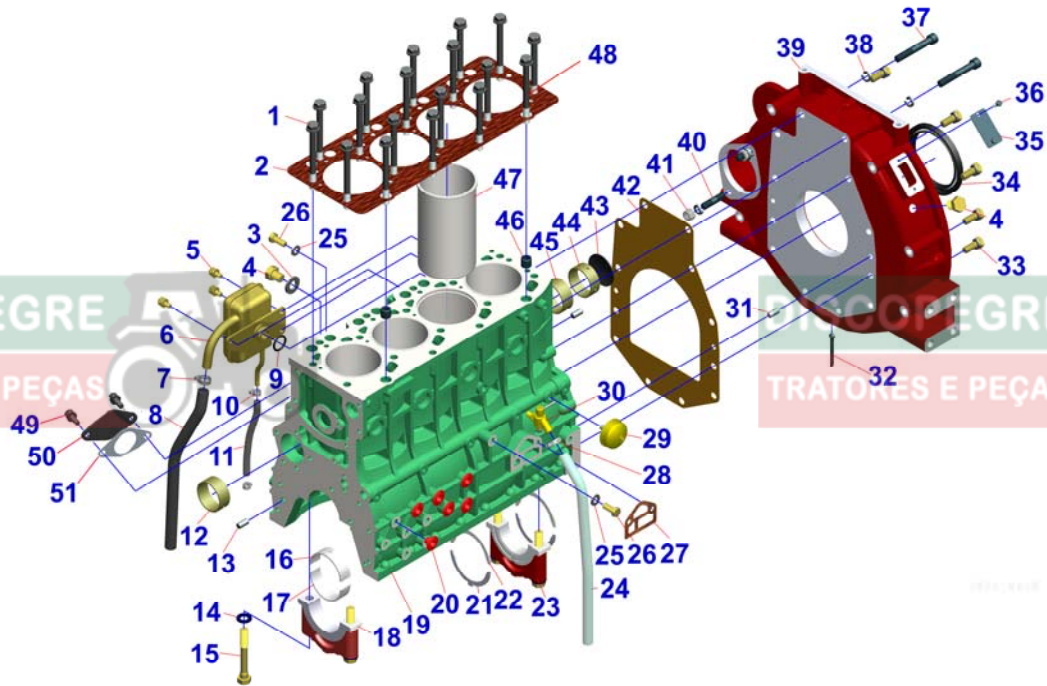
DISCOPEGRE
TRATORES E PEÇAS

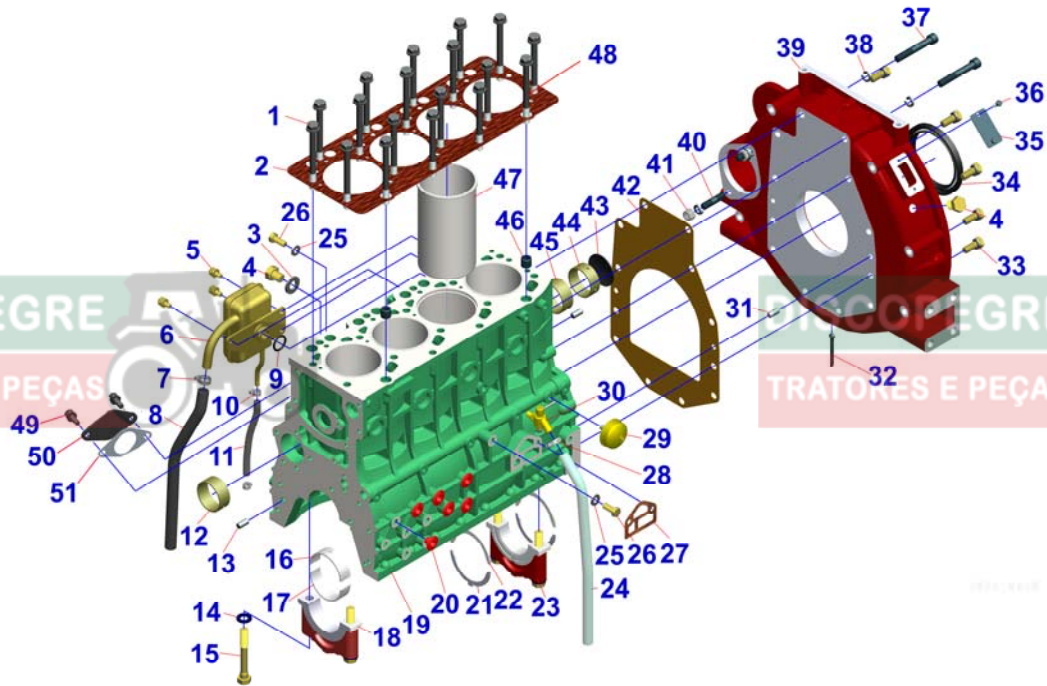
DISCOPEGRE
TRATORES E PEÇAS

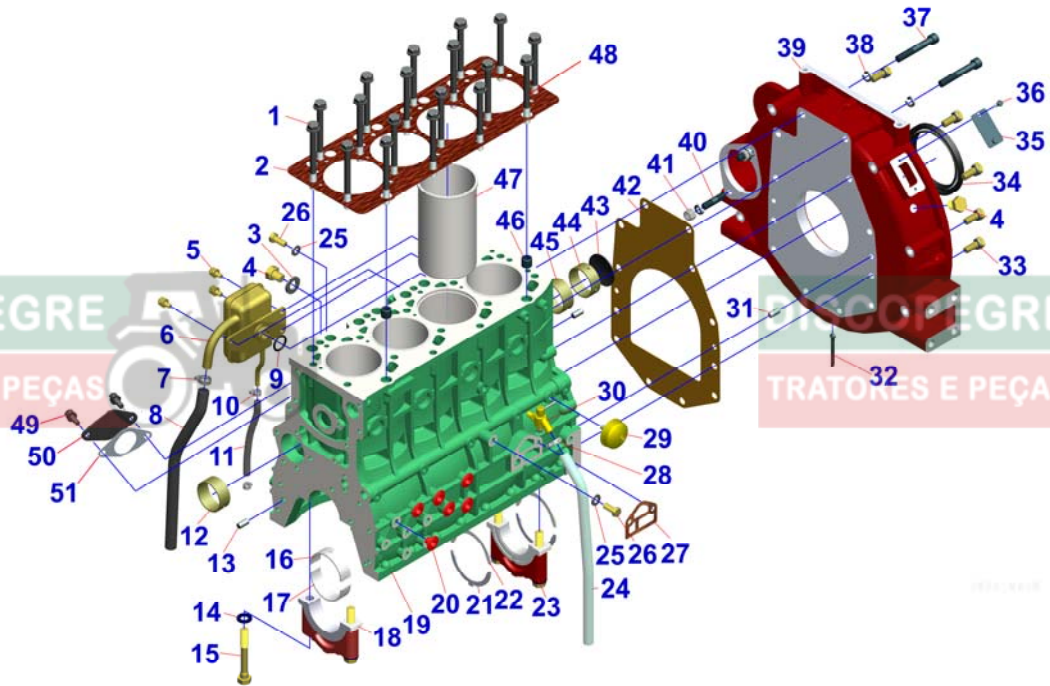
DISCOPEGRE
TRATORES E PEÇAS

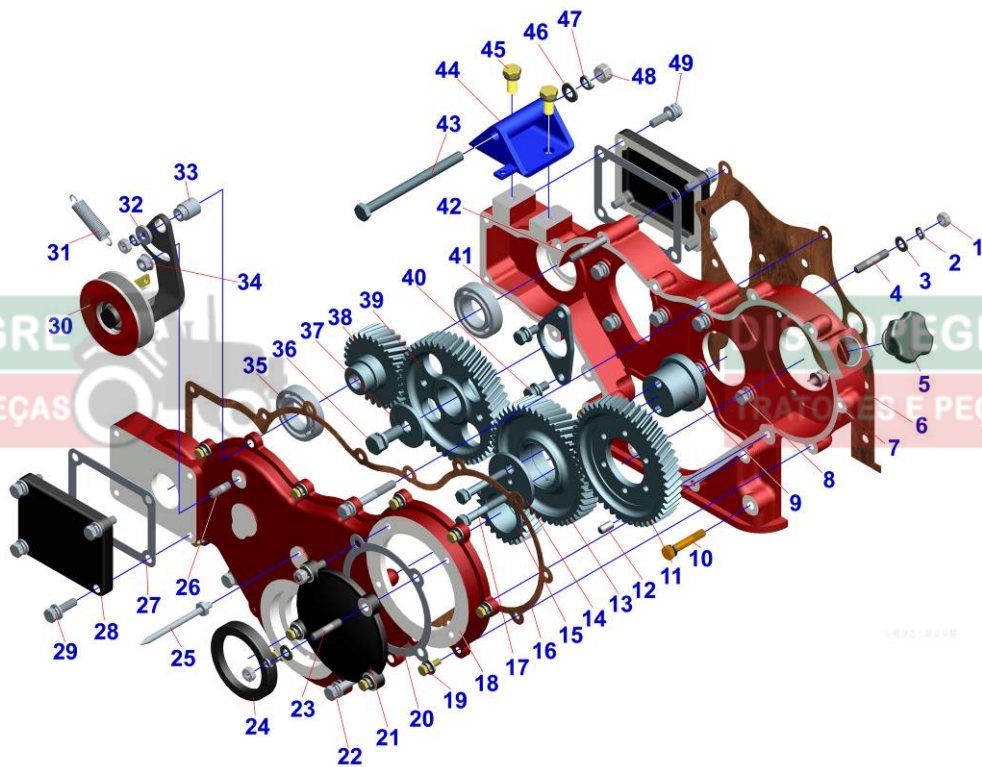


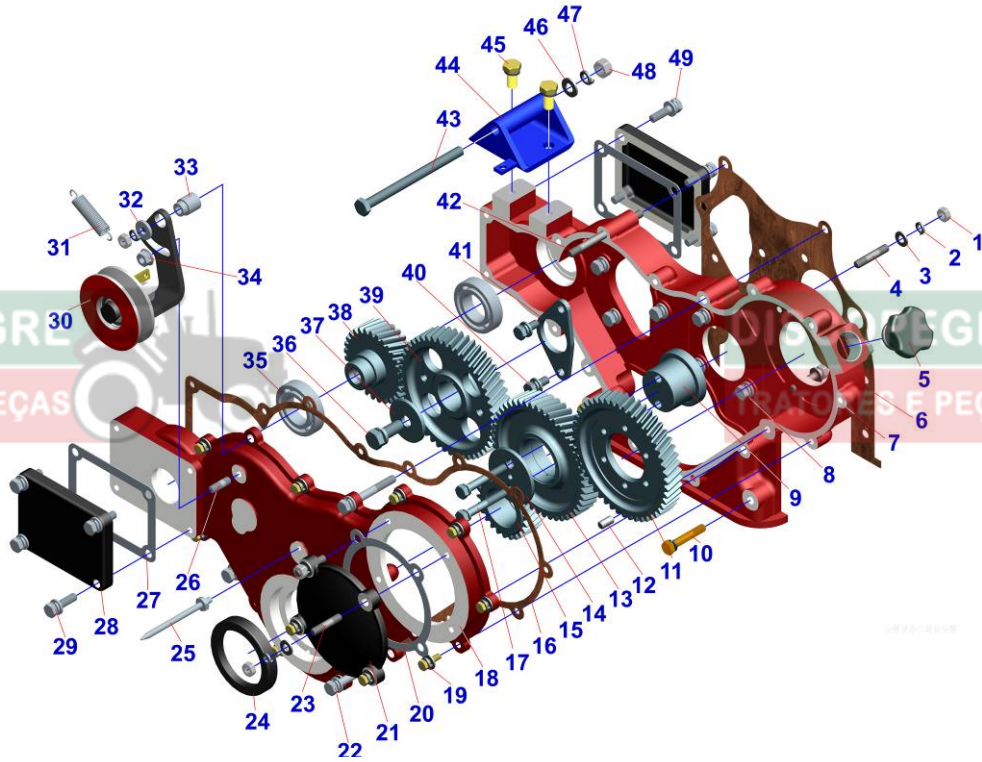


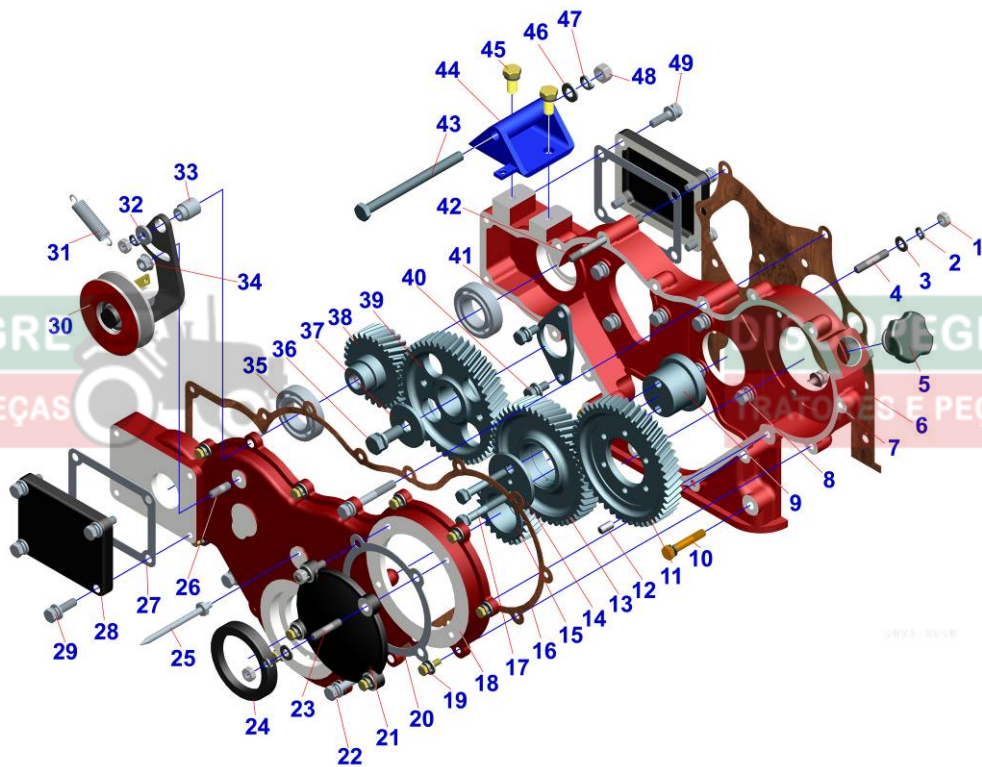


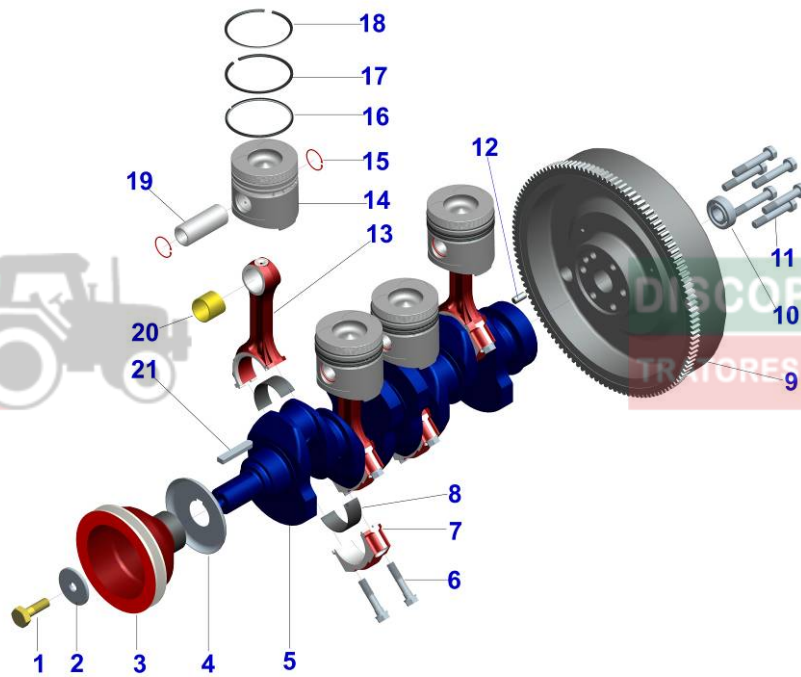












DISCOPEGRE
TRATORES E PEÇAS

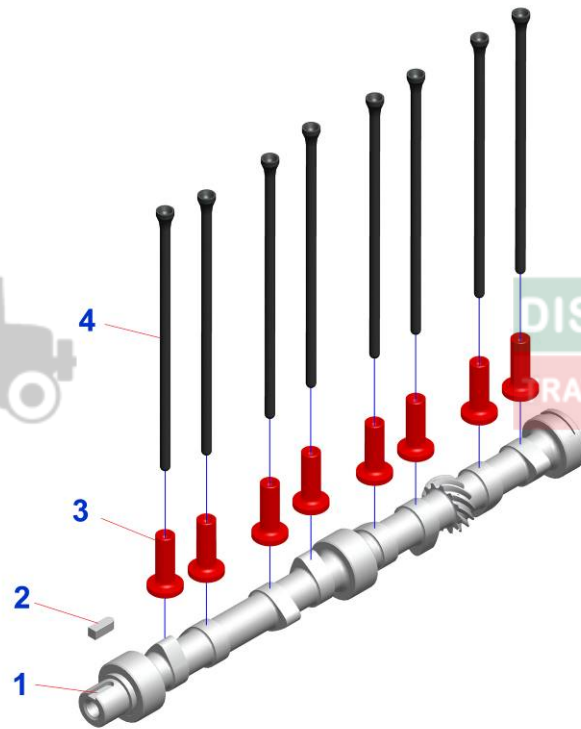
DISCOPEGRE
TRATORES E PEÇAS

DISCOPEGRE
TRATORES E PEÇAS

DISC
TRAT

DISCOPEGRE
TRATORES E PEÇAS

DISCOPEGRE
TRATORES E PEÇAS



DISCOPEGRE

TRATORES E PEÇAS

DISCOPEGRE

TRATORES E PEÇAS

DISCOPEGRE

TRATORES E PEÇAS

DISCOPEGRE

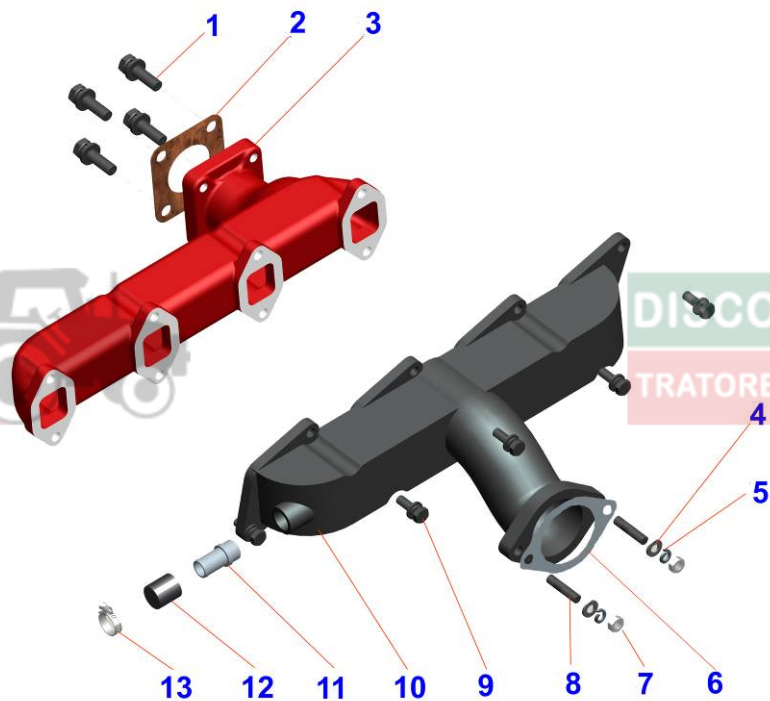
TRATORES E PEÇAS

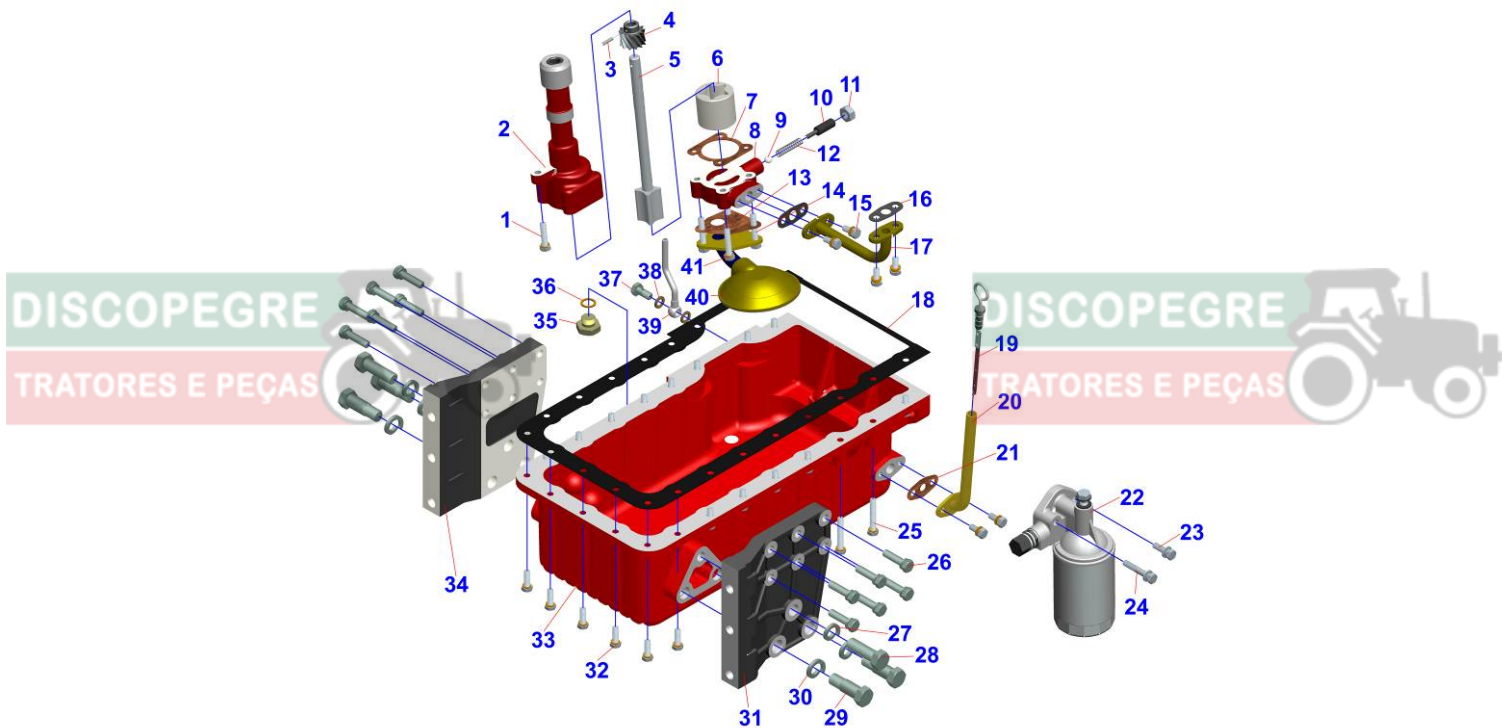
DISCOPEGRE

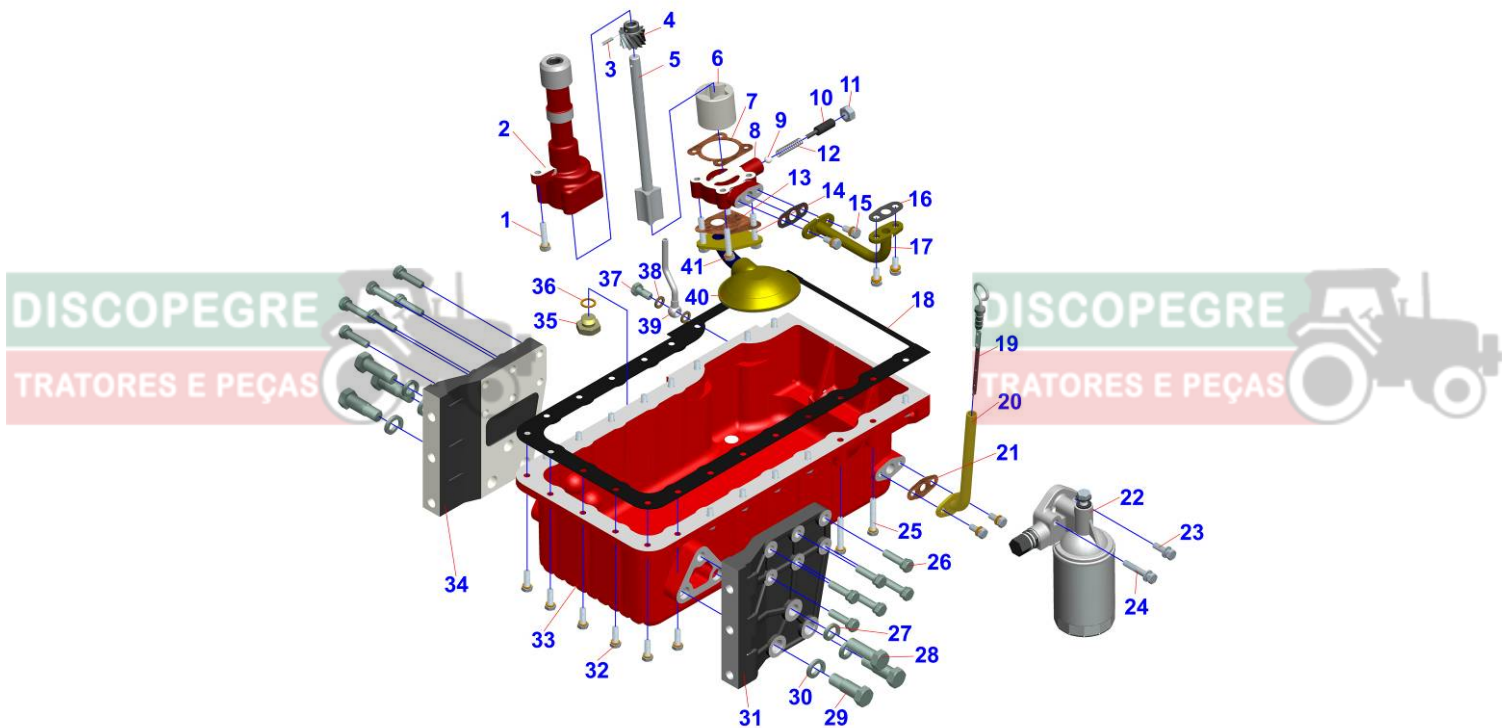
TRATORES E PEÇAS

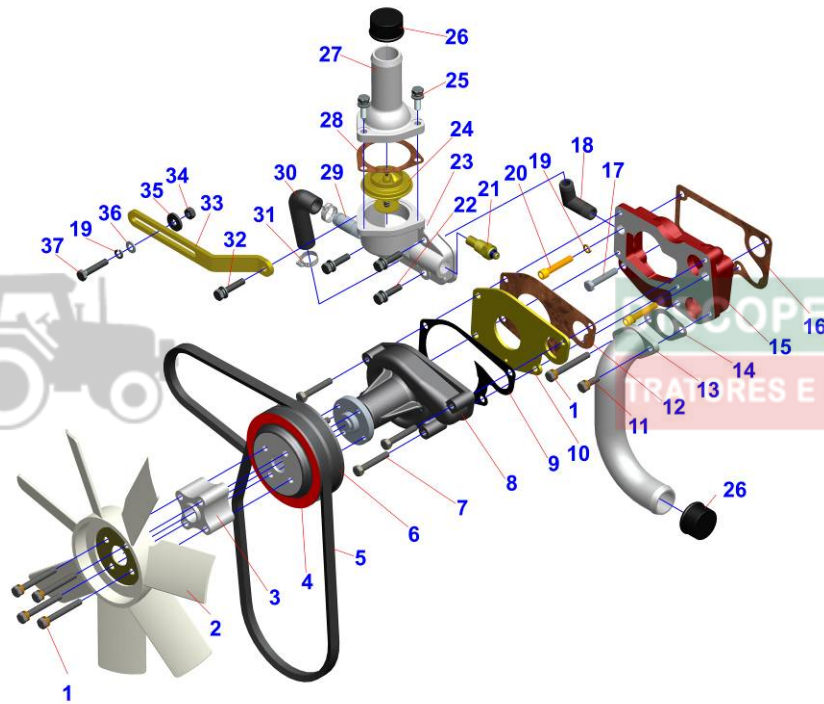
DISCOPEGRE

TRATORES E PEÇAS









DISCOPEGRE
TRATORES E PEÇAS

DISCOPEGRE
TRATORES E PEÇAS

DISCOPEGRE
TRATORES E PEÇAS

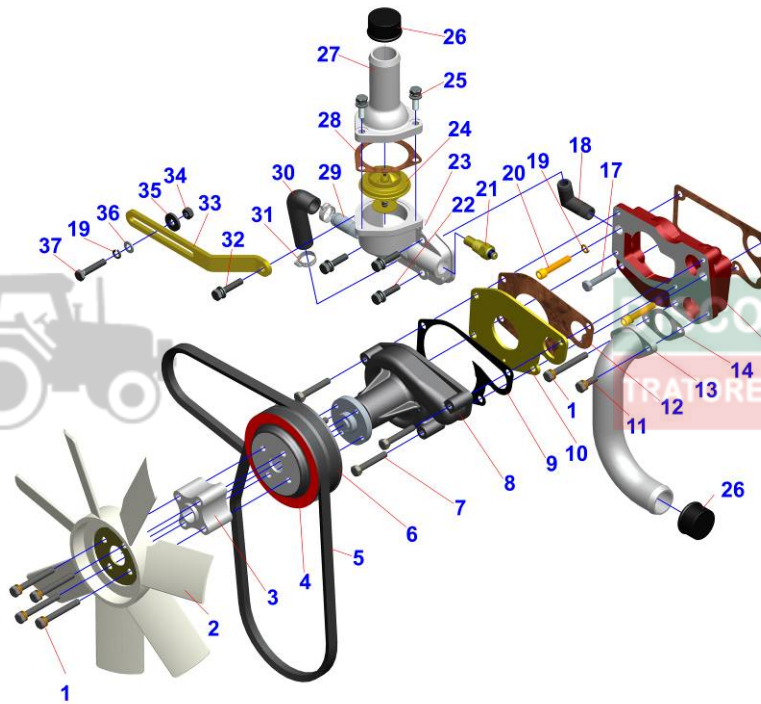
DISCOPEGRE
TRATORES E PEÇAS

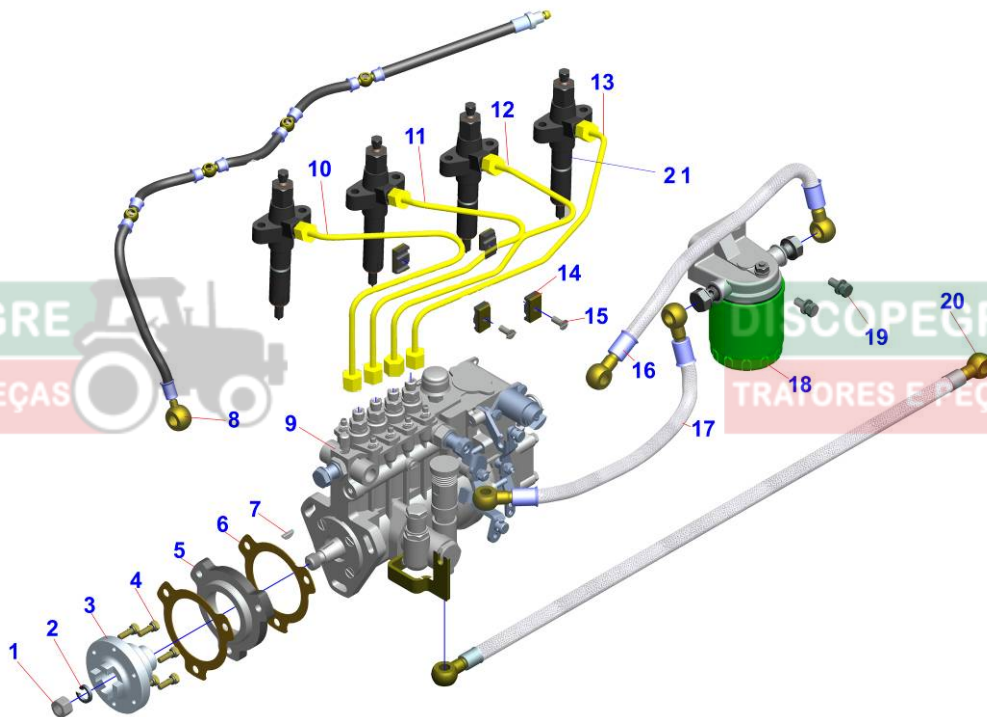
DISCOPEGRE
TRATORES E PEÇAS

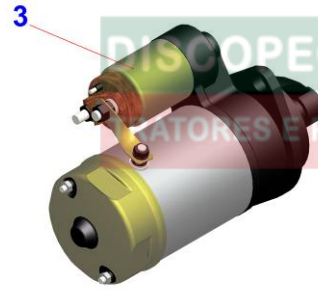
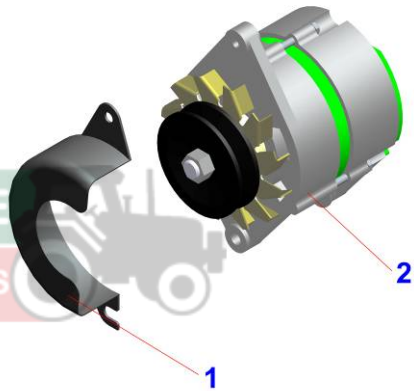
DISCOPEGRE
TRATORES E PEÇAS

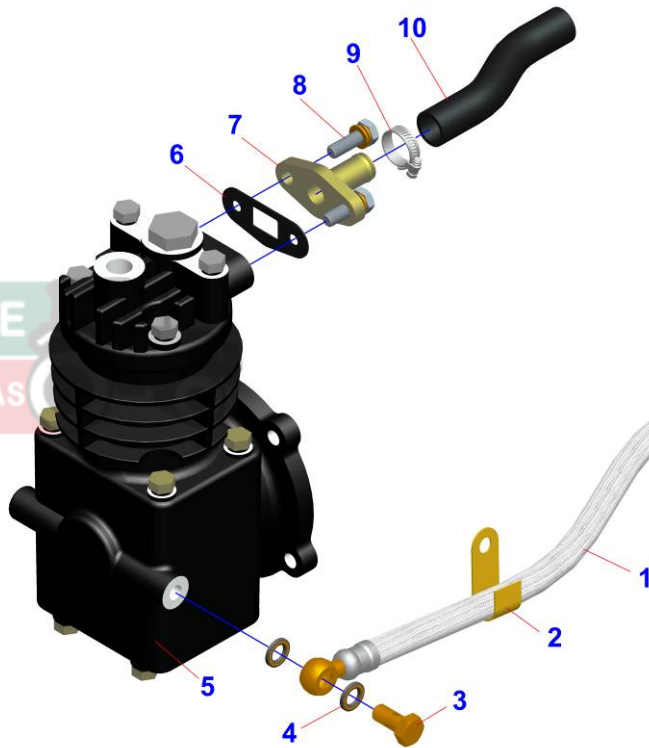
DISCOPEGRE
TRATORES E PEÇAS

DISCOPEGRE
TRATORES E PEÇAS









DISCOPEGRE
TRATORES E PEÇAS

DISCOPEGRE
TRATORES E PEÇAS

DISCOPEGRE
TRATORES E PEÇAS

DISCOPEGRE
TRATORES E PEÇAS

DISCOPEGRE
TRATORES E PEÇAS

DISCOPEGRE
TRATORES E PEÇAS

DISCOPEGRE
TRATORES E PEÇAS

DISCOPEGRE
TRATORES E PEÇAS